

MDFI Polyclonal Antibody

catalog number: **E-AB-18801**

Note: Centrifuge before opening to ensure complete recovery of vial contents.

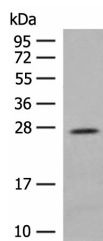
Description

Reactivity	Human;Rat
Immunogen	Fusion protein of human MDFI
Host	Rabbit
Isotype	IgG
Purification	Antigen affinity purification
Buffer	Phosphate buffered solution, pH 7.4, containing 0.05% stabilizer and 50% glycerol.

Applications Recommended Dilution

WB	1:500-1:2000
IHC	1:50-1:300

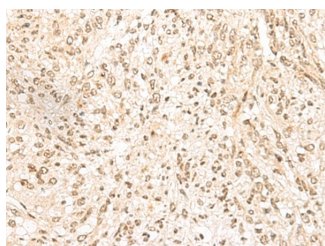
Data



Western blot analysis of Human placenta tissue lysate using MDFI Polyclonal Antibody at dilution of 1:400

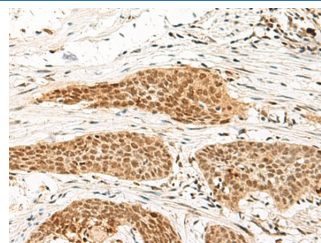
Observed-MW:Refer to figures

Calculated-MW:25 kDa



Immunohistochemistry of paraffin-embedded Human liver cancer tissue using MDFI Polyclonal Antibody at dilution of

1:55(×200)



Immunohistochemistry of paraffin-embedded Human esophagus cancer tissue using MDFI Polyclonal Antibody at dilution of 1:55(×200)

Preparation & Storage

Storage	Store at -20°C Valid for 12 months. Avoid freeze / thaw cycles.
Shipping	The product is shipped with ice pack,upon receipt,store it immediately at the temperature recommended.

Background

For Research Use Only

This protein is a transcription factor that negatively regulates other myogenic family proteins. Studies of the mouse homolog, I-mf, show that it interferes with myogenic factor function by masking nuclear localization signals and preventing DNA binding. Knockout mouse studies show defects in the formation of vertebrae and ribs that also involve cartilage formation in these structures. MDFI (MyoD Family Inhibitor) is a Protein Coding gene. GO annotations related to this gene include transcription factor binding. An important paralog of this gene is MDFIC.

For Research Use Only

Toll-free: 1-888-852-8623
Web: www.elabscience.com

Tel: 1-832-243-6086
Email: techsupport@elabscience.com

Fax: 1-832-243-6017

Rev. V1.7