

CUL1 Polyclonal Antibody

catalog number: E-AB-60629

Note: Centrifuge before opening to ensure complete recovery of vial contents.

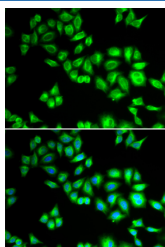
Description

Reactivity	Human;Mouse;Rat
Immunogen	Recombinant fusion protein of human CUL1 (NP_003583.2).
Host	Rabbit
Isotype	IgG
Purification	Affinity purification
Buffer	Phosphate buffered solution, pH 7.4, containing 0.05% stabilizer and 50% glycerol.

Applications

Applications	Recommended Dilution
IF	1:10-1:100

Data



Immunofluorescence analysis of HeLa cells using CUL1
Polyclonal Antibody

Preparation & Storage

Storage	Store at -20°C Valid for 12 months. Avoid freeze / thaw cycles.
Shipping	The product is shipped with ice pack, upon receipt, store it immediately at the temperature recommended.

Background

CUL1 (Cullin 1) is a Protein Coding gene. Diseases associated with CUL1 include Vaccinia and Weaver Syndrome. Among its related pathways are Regulation of Wnt-mediated beta catenin signaling and target gene transcription and FBXW7 Mutants and NOTCH1 in Cancer. Gene Ontology (GO) annotations related to this gene include ubiquitin protein ligase binding. An important paralog of this gene is CUL2.

For Research Use Only