

MSRB2 Polyclonal Antibody

catalog number: E-AB-63065

Note: Centrifuge before opening to ensure complete recovery of vial contents.

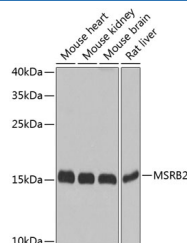
Description

Reactivity	Human;Mouse;Rat
Immunogen	Recombinant fusion protein of human MSRB2 (NP_036360.3).
Host	Rabbit
Isotype	IgG
Purification	Affinity purification
Buffer	Phosphate buffered solution, pH 7.4, containing 0.05% stabilizer and 50% glycerol.

Applications

Applications	Recommended Dilution
WB	1:500-1:2000
IHC	1:50-1:100

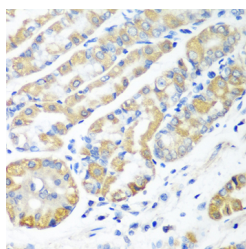
Data



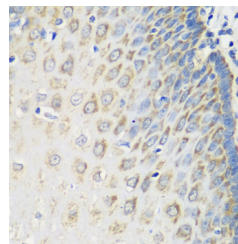
Western blot analysis of extracts of various cell lines using MSRB2 Polyclonal Antibody at dilution of 1:1000.

Observed-MW:20 kDa

Calculated-MW:19 kDa



Immunohistochemistry of paraffin-embedded Human stomach using MSRB2 Polyclonal Antibody at dilution of 1:100 (40x lens).



Immunohistochemistry of paraffin-embedded Human esophagus using MSRB2 Polyclonal Antibody at dilution of 1:100 (40x lens).

Preparation & Storage

Storage	Store at -20°C Valid for 12 months. Avoid freeze / thaw cycles.
Shipping	The product is shipped with ice pack, upon receipt, store it immediately at the temperature recommended.

Background

For Research Use Only

MSRB2 (Methionine Sulfoxide Reductase B2) is a Protein Coding gene. Diseases associated with MSRB2 include Myotonia Congenita and Coffin-Siris Syndrome 1. Among its related pathways are Protein repair and Metabolism of proteins. Gene Ontology (GO) annotations related to this gene include DNA-binding transcription factor activity and peptide-methionine (R)-S-oxide reductase activity. An important paralog of this gene is MSRB3.

For Research Use Only

Toll-free: 1-888-852-8623
Web: www.elabscience.com

Tel: 1-832-243-6086
Email: techsupport@elabscience.com

Fax: 1-832-243-6017

Rev. V1.7