

alpha Tubulin Monoclonal Antibody

catalog number: E-AB-48012

Note: Centrifuge before opening to ensure complete recovery of vial contents.

Description

Reactivity	Human;Mouse;E.coli;Scallop;Zebrafish
Immunogen	Recombinant human TUBA protein
Host	Mouse
Isotype	IgG2a
Clone	2H2
Purification	Protein A/G Purification
Buffer	PBS with 0.05% Proclin300, 1% protective protein and 50% glycerol, pH7.4

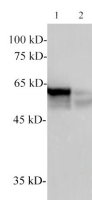
Applications

WB

Recommended Dilution

1:2000-5000

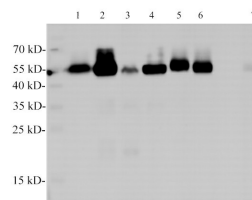
Data



Western Blotting with anti-TUBA monoclonal antibody at dilution of 1:3000. Lane 1: Scallop Muscle lysates, Lane 2: Zebrafish lysates

Observed-MW:55 kDa

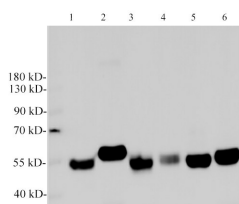
Calculated-MW:55 kDa



Western Blotting with anti-TUBA monoclonal antibody at dilution of 1:2000. Lane 1: Hela cell lysates, Lane 2: jurkat cell lysates, Lane, 3: 293T lysates, Lane 4: MCF-7 cell lysates, Lane 5: HT-29 cell lysates, Lane 6: HepG2 cell lysates, Lane 7: Rat kidney lysates

Observed-MW:55 kDa

Calculated-MW:55 kDa



Western Blotting with anti-TUBA monoclonal antibody at dilution of 1:2000. Lane 1: NIH/3T3 cell lysates, Lane 2: Raw264.7 cell lysates, Lane 3: Mouse heart lysates, Lane 4: Mouse spleen lysates, Lane 5: Mouse brain lysates, Lane 6: Mouse kidney lysates

Observed-MW:55 kDa

Calculated-MW:55 kDa

Preparation & Storage

Storage

Store at -20°C Valid for 12 months. Avoid freeze / thaw cycles.

For Research Use Only

Toll-free: 1-888-852-8623
Web: www.elabscience.com

Tel: 1-832-243-6086
Email: techsupport@elabscience.com

Fax: 1-832-243-6017

Rev. V2.1

Shipping

The product is shipped with ice pack, upon receipt, store it immediately at the temperature recommended.

Background

Tubulin is a highly conserved $\alpha\beta$ dimeric protein present and is essential for all eukaryotes. $\alpha\beta$ -Tubulin dimers assemble into microtubules, dynamic polymers important in a variety of functions, most noticeably, mitosis. Tubulin assembly and disassembly are linked to guanosine triphosphate hydrolysis.

For Research Use Only

Toll-free: 1-888-852-8623
Web: www.elabscience.com

Tel: 1-832-243-6086
Email: techsupport@elabscience.com

Fax: 1-832-243-6017

Rev. V2.1