

Recombinant Mouse Siglec-10 (C-Fc)

Catalog Number: PKSM041425

Note: Centrifuge before opening to ensure complete recovery of vial contents.

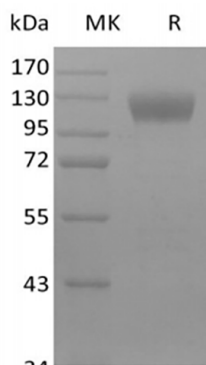
Description

Species	Mouse
Source	HEK293 Cells-derived Mouse Siglec-10 protein Met19-Lys543, with an C-terminal Fc
Calculated MW	85.6 kDa
Observed MW	110-135 kDa
Accession	Q80ZE3
Bio-activity	Not validated for activity

Properties

Purity	> 95 % as determined by reducing SDS-PAGE.
Endotoxin	< 1.0 EU per µg of the protein as determined by the LAL method.
Storage	Generally, lyophilized proteins are stable for up to 12 months when stored at -20 to -80 °C. Reconstituted protein solution can be stored at 4-8°C for 2-7 days. Aliquots of reconstituted samples are stable at < -20°C for 3 months.
Shipping	This product is provided as lyophilized powder which is shipped with ice packs.
Formulation	Lyophilized from a 0.2 µm filtered solution of PBS, pH 7.4. Normally 5% - 8% trehalose, mannitol and 0.01% Tween 80 are added as protectants before lyophilization. Please refer to the specific buffer information in the printed manual.
Reconstitution	Please refer to the printed manual for detailed information.

Data



> 95 % as determined by reducing SDS-PAGE.

Background

Siglecs (sialic acid binding Ig-like lectins) are I-type lectins that belong to the immunoglobulin superfamily. They are characterized by an N-terminal Ig-like V-type domain which mediates sialic acid binding, followed by a varying number of Ig-like C2-type domains. Siglecs 5-11 constitute the CD33/Siglec-3 related group, and are differentially expressed in the hematopoietic system. Siglec-G is the apparent ortholog of human Siglec-10. We describe here a novel member of the siglec protein family that shares a similar structure including five Ig-like domains, a transmembrane domain, and a cytoplasmic tail containing two ITIM-signaling motifs. Siglec-10 was identified through database mining of an asthmatic eosinophil EST library. Siglec-10 binds sialated proteins and lipids in alpha 2,3 or alpha 2,6 linkage and shows a preference for GT1b gangliosides. This binding can be modulated by cis interactions of Siglec-10 with sialated molecules expressed on the same cell. When tyrosine phosphorylated, the cytoplasmic ITIMs interact with phosphatases SHP-1 and SHP-2 to propagate inhibitory signals. The Siglec-10-VAP-1 interaction seems to mediate lymphocyte adhesion to endothelium and has the potential to modify the inflammatory microenvironment via the enzymatic end products.