

Recombinant Human G-CSF/CSF3 Protein

Catalog Number: PKSH033663

Note: *Centrifuge before opening to ensure complete recovery of vial contents.*

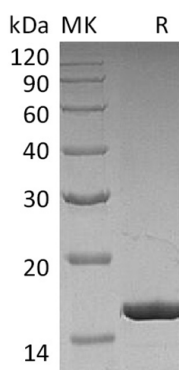
Description

Species	Human
Source	E.coli-derived Human G-CSF;CSF3 protein Thr31-Pro204
Calculated MW	18.8 kDa
Observed MW	16 kDa
Accession	P09919-2
Bio-activity	Not validated for activity

Properties

Purity	> 95 % as determined by reducing SDS-PAGE.
Endotoxin	< 0.01 EU per µg of the protein as determined by the LAL method.
Storage	Generally, lyophilized proteins are stable for up to 12 months when stored at -20 to -80°C. Reconstituted protein solution can be stored at 4-8°C for 2-7 days. Aliquots of reconstituted samples are stable at < -20°C for 3 months.
Shipping	This product is provided as lyophilized powder which is shipped with ice packs.
Formulation	Lyophilized from a 0.2 µm filtered solution of 10mM HAc-NaAc, 150mM NaCl, 0.004% Tween 80, 5% Mannitol, pH 4.0. Normally 5% - 8% trehalose, mannitol and 0.01% Tween 80 are added as protectants before lyophilization. Please refer to the specific buffer information in the printed manual.
Reconstitution	Please refer to the printed manual for detailed information.

Data



> 95 % as determined by reducing SDS-PAGE.

Background

Human Granulocyte-Colony-Stimulating Factor (G-CSF) is 20 kD glycoprotein containing internal disulfide bonds. It induces the survival, proliferation, and differentiation of neutrophilic granulocyte precursor cells and it functionally activates mature blood neutrophils. Among the family of colony-stimulating factors, G-CSF is the most potent inducer of terminal differentiation to granulocytes and macrophages of leukemic myeloid cell lines. The synthesis of G-CSF can be induced by bacterial endotoxins, TNF, Interleukin-1, and GM-CSF. Prostaglandin E2 inhibits the synthesis of G-CSF. In epithelial, endothelial, and fibroblastic cells secretion of G-CSF is induced by Interleukin-17.

For Research Use Only