

PDE4A Polyclonal Antibody

catalog number: **E-AB-92180**

Note: Centrifuge before opening to ensure complete recovery of vial contents.

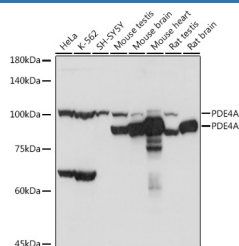
Description

| | |
|---------------------|--|
| Reactivity | Human;Mouse;Rat |
| Immunogen | Recombinant fusion protein of human PDE4A |
| Host | Rabbit |
| Isotype | IgG |
| Purification | Affinity purification |
| Buffer | Phosphate buffered solution, pH 7.4, containing 0.05% stabilizer and 50% glycerol. |

Applications

| Applications | Recommended Dilution |
|--------------|----------------------|
| WB | 1:1000-1:2000 |
| IHC | 1:50-1:200 |
| IF | 1:50-1:200 |

Data

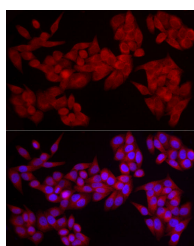


Western blot analysis of extracts of various cell lines using PDE4A Polyclonal Antibody at 1:1000 dilution.

Observed-MW:80 kDa/110 kDa

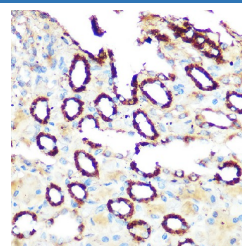
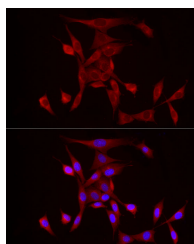
Calculated-MW:98 kDa/95 kDa/76 kDa/72 kDa/37 kDa/91

kDa/96 kDa



Immunofluorescence analysis of HeLa cells using PDE4A Polyclonal Antibody at dilution of 1:20 (40x lens). Blue:

DAPI for nuclear staining.

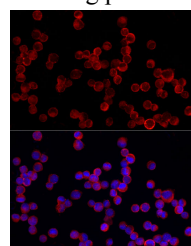


Immunohistochemistry of paraffin-embedded rat kidney using PDE4A Polyclonal Antibody at dilution of 1:100 (40x lens). Perform microwave antigen retrieval with 10 mM

Tris/EDTA buffer pH 9.0 before commencing with IHC

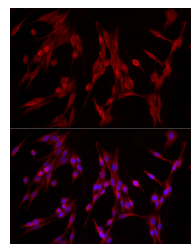
staining protocol.

staining protocol.



Immunofluorescence analysis of K-562 cells using PDE4A Polyclonal Antibody at dilution of 1:20 (40x lens). Blue:

DAPI for nuclear staining.



For Research Use Only

Immunofluorescence analysis of NIH/3T3 cells using PDE4A Polyclonal Antibody at dilution of 1:20 (40x lens). Blue: DAPI for nuclear staining.

Immunofluorescence analysis of PC-12 cells using PDE4A Polyclonal Antibody at dilution of 1:20 (40x lens). Blue: DAPI for nuclear staining.

Preparation & Storage

Storage

Store at -20°C Valid for 12 months. Avoid freeze / thaw cycles.

Shipping

The product is shipped with ice pack, upon receipt, store it immediately at the temperature recommended.

Background

The protein encoded by this gene belongs to the cyclic nucleotide phosphodiesterase (PDE) family, and PDE4 subfamily. This PDE hydrolyzes the second messenger, cAMP, which is a regulator and mediator of a number of cellular responses to extracellular signals. Thus, by regulating the cellular concentration of cAMP, this protein plays a key role in many important physiological processes. Alternatively spliced transcript variants encoding different isoforms have been described for this gene.

For Research Use Only