

Recombinant CD1a Monoclonal Antibody

catalog number: **AN301468L**

Note: *Centrifuge before opening to ensure complete recovery of vial contents.*

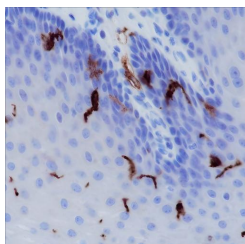
Description

Reactivity	Human;
Immunogen	Recombinant human CD1a fragment
Host	Rabbit
Isotype	IgG, κ
Clone	A163
Purification	Protein A purified
Buffer	PBS, 50% glycerol, 0.05% Proclin 300, 0.05% protein protectant.

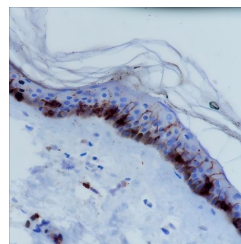
Applications Recommended Dilution

IHC	1:500-1:2000
mIHC	1:200-1:1000
FCM	1:50-1:100

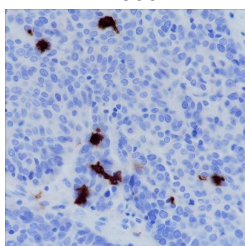
Data



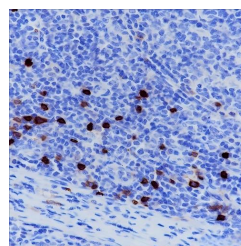
Immunohistochemistry of paraffin-embedded Human esophagus using CD1a Monoclonal Antibody at dilution of 1:1800.



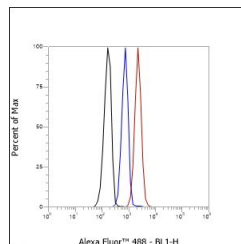
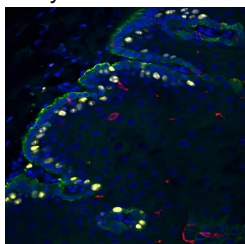
Immunohistochemistry of paraffin-embedded Human skin using CD1a Monoclonal Antibody at dilution of 1:1800.



Immunohistochemistry of paraffin-embedded Human squamous cervical carcinoma using CD1a Monoclonal Antibody at dilution of 1:1800.



Immunohistochemistry of paraffin-embedded Human tonsil using CD1a Monoclonal Antibody at dilution of 1:1800.



For Research Use Only

Toll-free: 1-888-852-8623
Web: www.elabscience.com

Tel: 1-832-243-6086
Email: techsupport@elabscience.com

Fax: 1-832-243-6017

Rev. V1.0

Immunohistochemistry of paraffin-embedded Human esophagus using CD1a Monoclonal Antibody at dilution of 1:1000.

Flow cytometric analysis of human CD1a expression on MOLT4 cells. Cells were stained with purified anti-Human CD1a, then a Alexa Fluor 488-conjugated second step antibody. The histogram were derived from events with the forward and side light-scatter characteristics of intact cells.

Preparation & Storage

Storage Store at -20°C Valid for 12 months. Avoid freeze / thaw cycles.
Shipping Ice bag

Background

Antigen-presenting protein that binds self and non-self lipid and glycolipid antigens and presents them to T-cell receptors on natural killer T-cells.

For Research Use Only

Toll-free: 1-888-852-8623
Web: www.elabscience.com

Tel: 1-832-243-6086
Email: techsupport@elabscience.com

Fax: 1-832-243-6017

Rev. V1.0