

Recombinant Human PTEN MMAC1 TEP1 Protein(Sumo Tag)

Catalog Number: PDEH100567



Note: Centrifuge before opening to ensure complete recovery of vial contents.

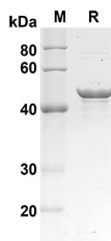
Description

Species	Human
Source	E.coli-derived Human PTEN MMAC1 TEP1 protein Pro204-Val403, with an N-terminal Sumo
Mol_Mass	34.8 kDa
Accession	P60484
Bio-activity	Not validated for activity

Properties

Purity	> 90% as determined by reducing SDS-PAGE.
Endotoxin	< 10 EU/mg of the protein as determined by the LAL method
Storage	Generally, lyophilized proteins are stable for up to 12 months when stored at -20 to -80 °C. Reconstituted protein solution can be stored at 4-8°C for 2-7 days. Aliquots of reconstituted samples are stable at < -20°C for 3 months.
Shipping	This product is provided as lyophilized powder which is shipped with ice packs.
Formulation	Lyophilized from a 0.2 µm filtered solution in PBS with 5% Trehalose and 5% Mannitol.
Reconstitution	It is recommended that sterile water be added to the vial to prepare a stock solution of 0.5 mg/mL. Concentration is measured by UV-Vis.

Data



SDS-PAGE analysis of Human PTEN MMAC1 TEP1 proteins , 2µg/lane of Recombinant Human PTEN MMAC1 TEP1 proteins was resolved with SDS-PAGE under reducing conditions , showing bands at 43 KD

For Research Use Only

A Reliable Research Partner in Life Science and Medicine
Tel:400-999-2100

Email:techsupport@elabscience.cn

Web:www.elabscience.cn

Rev. V1.6