

# Recombinant Human PSMA / FOLH1 protein (His Tag)

Catalog Number: PDEH100942



**Note:** Centrifuge before opening to ensure complete recovery of vial contents.

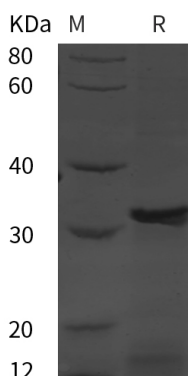
## Description

<b>Species</b>	Human
<b>Mol_Mass</b>	30.7 kDa
<b>Accession</b>	Q04609
<b>Bio-activity</b>	Not validated for activity

## Properties

<b>Purity</b>	> 95% as determined by reducing SDS-PAGE.
<b>Endotoxin</b>	< 10 EU/mg of the protein as determined by the LAL method
<b>Storage</b>	Generally, lyophilized proteins are stable for up to 12 months when stored at -20 to -80 °C. Reconstituted protein solution can be stored at 4-8°C for 2-7 days. Aliquots of reconstituted samples are stable at < -20°C for 3 months.
<b>Shipping</b>	This product is provided as lyophilized powder which is shipped with ice packs.
<b>Formulation</b>	Lyophilized from a 0.2 µm filtered solution in PBS with 5% Trehalose and 5% Mannitol.
<b>Reconstitution</b>	It is recommended that sterile water be added to the vial to prepare a stock solution of 0.5 mg/mL. Concentration is measured by UV-Vis.

## Data



> 95 % as determined by reducing SDS-PAGE.

## Background

Glutamate carboxypeptidase 2, also known as FOLH1, PSMA, belongs to the M28B subfamily and the peptidase M28 family. It is highly expressed in prostate epithelium and can be detected in urinary bladder, kidney, testis, ovary, fallopian tube, breast, adrenal gland, liver, esophagus, stomach, small intestine, colon and brain (at protein level). PSMA is used as a diagnostic and prognostic indicator of prostate cancer, and as a possible marker for various neurological disorders such as schizophrenia, Alzheimer disease and Huntington disease. It has both folate hydrolase and N-acetylated-alpha-linked-acidic dipeptidase (NAALADase) activity and has a preference for tri-alpha-glutamate peptides. PSMA involves in prostate tumor progression and also exhibits a dipeptidyl-peptidase IV type activity. In vitro, PSMA cleaves Gly-Pro-AMC. PSMA is stable at pH greater than 6.5.

## For Research Use Only

A Reliable Research Partner in Life Science and Medicine  
Tel:400-999-2100

Email:[techsupport@elabscience.cn](mailto:techsupport@elabscience.cn)

Web:[www.elabscience.cn](http://www.elabscience.cn)

Rev. V1.2