

# CD38 Polyclonal Antibody

catalog number: D-AB-10189L

**Note:** Centrifuge before opening to ensure complete recovery of vial contents.

## Description

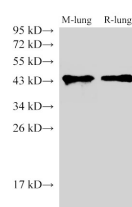
<b>Reactivity</b>	Human;Mouse;Rat
<b>Immunogen</b>	Recombinant Human CD38 protein expressed by E.coli
<b>Host</b>	Rabbit
<b>Isotype</b>	IgG
<b>Purification</b>	Antigen Affinity Purification
<b>Conjugation</b>	Unconjugated
<b>buffer</b>	PBS with 0.05% proclin 300, 1% protective protein and 50% glycerol,pH7.4

## Applications

## Recommended Dilution

<b>WB</b>	1:500-1:2000
<b>IHC</b>	1:500-1:1000

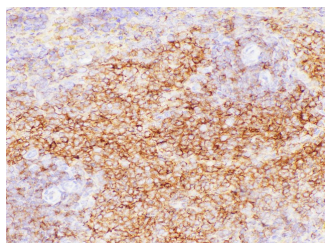
## Data



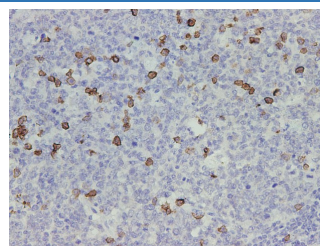
Western Blot analysis of Mouse lung and Rat lung using CD38 Polyclonal Antibody at dilution of 1:1000

**Observed-MV:45 kDa**

**Calculated-MV:34 kDa**



Immunohistochemistry of paraffin-embedded Rat spleen using CD38 Polyclonal Antibody at dilution of 1:200



Immunohistochemistry of paraffin-embedded Human tonsil tissue using CD38 Polyclonal Antibody at dilution of 1:1000

## Preparation & Storage

<b>Storage</b>	Store at -20°C Valid for 12 months. Avoid freeze / thaw cycles.
<b>Shipping</b>	The product is shipped with ice pack,upon receipt,store it immediately at the temperature recommended.

## Background

CD38(cluster of differentiation38), also known as cyclic ADP ribose hydrolase is a glycoprotein found on the surface of many immune cells (white blood cells), including CD4+, CD8+, B lymphocytes and natural killer cells. CD38 also functions in cell adhesion, signal transduction and calcium signaling. In humans, the CD38 protein is encoded by the CD38 gene which is located on chromosome 4.

## For Research Use Only