

## CORO1C Polyclonal Antibody

catalog number: E-AB-11096

**Note:** Centrifuge before opening to ensure complete recovery of vial contents.

### Description

|                     |  |
|---------------------|--|
| <b>Reactivity</b>   | Human;Mouse  |
| <b>Immunogen</b>    | Recombinant protein of human CORO1C  |
| <b>Host</b>         | Rabbit   |
| <b>Isotype</b>      | IgG  |
| <b>Purification</b> | Affinity purification  |
| <b>Conjugation</b>  | Unconjugated   |
| <b>Buffer</b>       | Phosphate buffered solution, pH 7.4, containing 0.05% stabilizer and 50% glycerol. |

### Applications

### Recommended Dilution

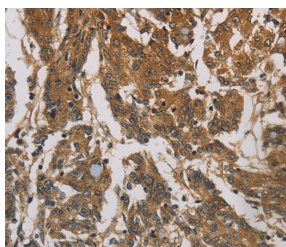
|            |              |
|------------|--------------|
| <b>WB</b>  | 1:500-1:2000 |
| <b>IHC</b> | 1:100-1:300  |

### Data

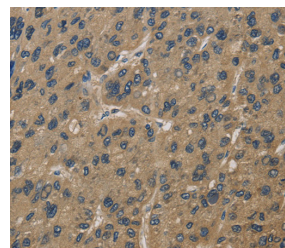


Western Blot analysis of Lovo cell using CORO1C Polyclonal Antibody at dilution of 1:670

**Calculated-MW:53 kDa**



Immunohistochemistry of paraffin-embedded Human colon cancer using CORO1C Polyclonal Antibody at dilution of 1:60



Immunohistochemistry of paraffin-embedded Human liver cancer using CORO1C Polyclonal Antibody at dilution of 1:60

### Preparation & Storage

|                 |  |
|-----------------|--|
| <b>Storage</b>  | Store at -20°C Valid for 12 months. Avoid freeze / thaw cycles.  |
| <b>Shipping</b> | The product is shipped with ice pack, upon receipt, store it immediately at the temperature recommended. |

### Background

### For Research Use Only

This gene encodes a member of the WD repeat protein family. WD repeats are minimally conserved regions of approximately 40 amino acids typically bracketed by gly-his and trp-asp (GH-WD), which facilitate formation of heterotrimeric or multiprotein complexes. Members of this family are involved in a variety of cellular processes, including cell cycle progression, signal transduction, apoptosis, and gene regulation. Three transcript variants encoding two different isoforms have been found for this gene.