

PE Goat Anti-Mouse IgG (H+L) Antibody[Poly1440]

Catalog Number: AN00338D

Note: Centrifuge before opening to ensure complete recovery of vial contents.

Description

Reactivity	Mouse
Host	Goat
Isotype	Goat Polyclonal IgG
Clone No.	Poly1440
Conjugation	PE
Conjugation Information	PE is designed to be excited by the Blue (488 nm), Green (532 nm) and Yellow-Green (561 nm) lasers and detected using an optical filter centered near 575 nm (e.g., a 585/42 nm bandpass filter).
Storage Buffer	Phosphate buffered solution, pH 7.2, containing 0.09% sodium azide and 1% BSA.

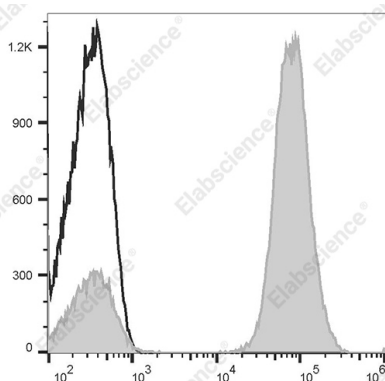
Applications

Recommended usage

FCM

Each lot of this antibody is quality control tested by flow cytometric analysis. **The amount of the reagent is suggested to be used 5 μ L of antibody per test (million cells in 100 μ L staining volume or per 100 μ L of whole blood).** Please check your vial before the experiment. Since applications vary, the appropriate dilutions must be determined for individual use.

Data



Staining of normal human peripheral blood cells with purified mouse anti-human CD3, followed by PE Goat Anti-Mouse IgG (H+L) Antibody[Poly1440](filled gray histogram). Cells in the lymphocytes gate were used for analysis.

Preparation & Storage

Storage	Keep as concentrated solution. This product can be stored at 2-8°C for 12 months. Please protected from prolonged exposure to light and do not freeze.
Shipping	Ice bag

Antigen Information

Alternate Names	Goat Anti-Mouse IgG
Uniprot ID	Q61559
Gene ID	16059

For Research Use Only

Background

This polyclonal goat anti-mouse IgG antibody reacts with the heavy chains of mouse IgG and with the light (kappa and lambda) chains common to most mouse immunoglobulins. No cross-reactivity has been detected against non-immunoglobulin serum proteins. This antibody has been solid-phase absorbed to ensure minimal cross-reaction with rat, human, bovine, horse, and rabbit immunoglobulins, but it may have minimal cross-reactivity with other subclasses of mouse immunoglobulins.