

SEPP1 Polyclonal Antibody

catalog number: **D-AB-10379L**

Note: Centrifuge before opening to ensure complete recovery of vial contents.

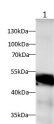
Description

Reactivity	Human;Rat
Immunogen	Recombinant Human SEPP1 protein expressed by E.coli
Host	Rabbit
Isotype	IgG
Purification	Antigen Affinity Purification
Buffer	PBS with 0.05% Proclin300, 1% protective protein and 50% glycerol, pH7.4

Applications

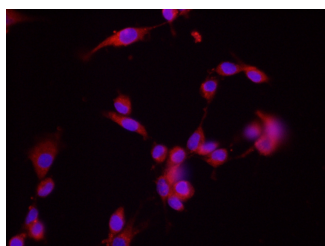
Applications	Recommended Dilution
WB	1:500-1:1000
IF	1:50-1:200

Data

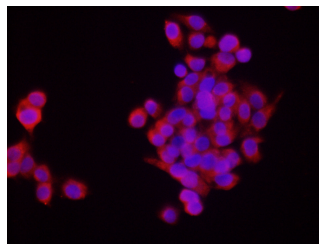


Western blot with SEPP1 Polyclonal antibody at dilution of 1:1000. lane 1: human serum

Observed-MW:50 kDa
Calculated-MW:43 kDa



Immunofluorescence analysis of C6 cells using SEPP1 Polyclonal Antibody at dilution of 1:200



Immunofluorescence analysis of HepG2 cells using SEPP1 Polyclonal Antibody at dilution of 1:200

Preparation & Storage

Storage	Store at -20°C Valid for 12 months. Avoid freeze / thaw cycles.
Shipping	The product is shipped with ice pack, upon receipt, store it immediately at the temperature recommended.

Background

For Research Use Only

Selenoprotein P (SeP) is an extracellular, monomeric glycoprotein containing up to 10 selenocysteine residues in the polypeptide chain. It is ubiquitously expressed in mammalian tissues, and in human plasma it accounts for at least 40% of the total selenium concentration. SeP binds to heparin and cell membranes, and is associated with endothelial cells. SeP in human plasma protects against peroxynitrite-mediated oxidation and reduces phospholipid hydroperoxide in vitro, in accordance with the presumption that it has a function as an extracellular oxidant defense. Immunochemical assays have demonstrated that its concentration in plasma varies much with selenium intake, but other factors also have an influence