

Galectin-3 Polyclonal Antibody

catalog number: AN000300P

Note: Centrifuge before opening to ensure complete recovery of vial contents.

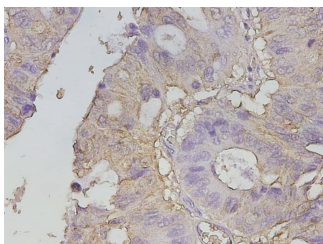
Description

Reactivity	Human;Mouse
Immunogen	Recombinant Human Galectin-3 protein expressed by E.coli
Host	Rabbit
Isotype	Rabbit IgG
Purification	Antigen Affinity Purification
Buffer	Phosphate buffered solution, pH 7.2, containing 0.05% proclin 300.

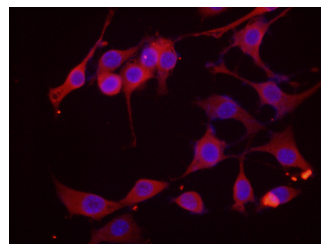
Applications

IHC	1:650-1:1250
IF	1:50-1:200
ELISA Capture	2-8 µg/mL
ELISA Detector	0.1-0.4 µg/mL

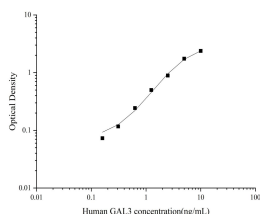
Data



Immunohistochemistry of paraffin-embedded Human colon cancer using Galectin-3 Polyclonal Antibody at dilution of 1:1250



Immunofluorescence analysis of NIH-3T3 cells using Galectin-3 Polyclonal Antibody at dilution of 1:200



Sandwich ELISA-Recombinant Human Galectin-3 protein standard curve. Background subtracted standard curve using Galectin-3 antibody(AN000300P)(Capture), Galectin-3 antibody(AN000300P)(Detector) in sandwich ELISA. The reference range value for Recombinant Human Galectin-3 protein is 0.15625-10 ng/mL.

Preparation & Storage

Storage	Store at 4°C valid for 12 months or -20°C valid for long term storage, avoid freeze / thaw cycles.
Shipping	The product is shipped with ice pack, upon receipt, store it immediately at the temperature recommended.

For Research Use Only

Background

Galactose-specific lectin which binds IgE. May mediate with the alpha-3,beta-1 integrin the stimulation by CSPG4 of endothelial cells migration. Together with DMBT1,required for terminal differentiation of columnar epithelial cells during early embryogenesis.In the nucleus: acts as a pre-mRNA splicing factor. Involved in acute inflammatory responses including neutrophil activation and adhesion,chemoattraction of monocytes macrophages,opsonization of apoptotic neutrophils,and activation of mast cells. Together with TRIM16,coordinates the recognition of membrane damage with mobilization of the core autophagy regulators ATG16L1 and BECN1 in response to damaged endomembranes.

For Research Use Only