

## Recombinant Human LSM1 Protein (His Tag)

Catalog Number: PKSH033172

**Note:** Centrifuge before opening to ensure complete recovery of vial contents.

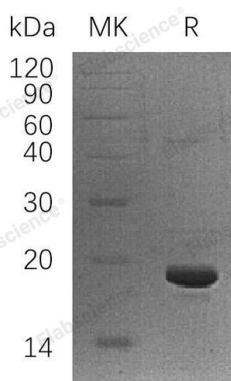
### Description

<b>Species</b>	Human
<b>Source</b>	E.coli-derived Human LSM1 protein Met 1-Tyr133, with an C-terminal His
<b>Calculated MW</b>	16.2 kDa
<b>Observed MW</b>	19 kDa
<b>Accession</b>	O15116
<b>Bio-activity</b>	Not validated for activity

### Properties

<b>Purity</b>	> 90 % as determined by reducing SDS-PAGE.
<b>Endotoxin</b>	< 1.0 EU per µg of the protein as determined by the LAL method.
<b>Storage</b>	Generally, lyophilized proteins are stable for up to 12 months when stored at -20 to -80°C. Reconstituted protein solution can be stored at 4-8°C for 2-7 days. Aliquots of reconstituted samples are stable at < -20°C for 3 months.
<b>Shipping</b>	This product is provided as lyophilized powder which is shipped with ice packs.
<b>Formulation</b>	Lyophilized from a 0.2 µm filtered solution of 20mM PB, 150mM NaCl, pH 7.2. Normally 5% - 8% trehalose, mannitol and 0.01% Tween 80 are added as protectants before lyophilization.
<b>Reconstitution</b>	Please refer to the specific buffer information in the printed manual. Please refer to the printed manual for detailed information.

### Data



> 90 % as determined by reducing SDS-PAGE.

### Background

U6 snRNA-Associated Sm-Like Protein LSm1 (LSM1) belongs to the snRNP Sm proteins family. The Sm-like proteins are thought to form a stable heteromer present in tri-snRNP particles, which plays an important role in pre-mRNA splicing. LSM1 binds specifically to the 3-terminal U-tract of U6snRNA. LSM1 can interact with SLBP when histone mRNA is being rapidly degraded during the S phase. In addition, LSM1 is associated with cellular transformation and the progression of several malignancies including mesothelioma, lung cancer and breast cancer.

### For Research Use Only

Toll-free: 1-888-852-8623  
Web: [www.elabscience.com](http://www.elabscience.com)

Tel: 1-832-243-6086  
Email: [techsupport@elabscience.com](mailto:techsupport@elabscience.com)

Fax: 1-832-243-6017