

## Phospho-CAMK2 beta/gamma/delta (Thr287) Monoclonal Antibody

catalog number: E-AB-51035

**Note:** Centrifuge before opening to ensure complete recovery of vial contents.

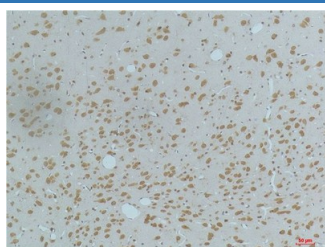
### Description

<b>Reactivity</b>	Human;Mouse;Rat
<b>Immunogen</b>	Synthetic Peptide
<b>Host</b>	Mouse
<b>Isotype</b>	IgG
<b>Clone</b>	4H2
<b>Purification</b>	Protein A purification
<b>Buffer</b>	Phosphate buffered solution, pH 7.4, containing 0.05% stabilizer, 0.5% protein protectant and 50% glycerol.

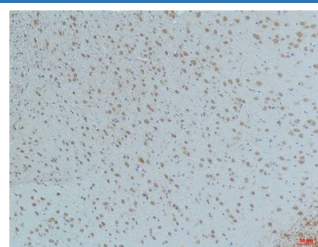
### Applications Recommended Dilution

<b>IHC</b>	1:100-200
------------	-----------

### Data



Immunohistochemistry of paraffin-embedded Rat brain tissue using Phospho-CAMK2 beta/gamma/delta (Thr287) Monoclonal Antibody at dilution of 1:200.



Immunohistochemistry of paraffin-embedded Mouse brain tissue using Phospho-CAMK2 beta/gamma/delta (Thr287) Monoclonal Antibody at dilution of 1:200.

### Preparation & Storage

<b>Storage</b>	Store at -20°C Valid for 12 months. Avoid freeze / thaw cycles.
<b>Shipping</b>	The product is shipped with ice pack, upon receipt, store it immediately at the temperature recommended.

### Background

CAMK2B (Calcium/Calmodulin Dependent Protein Kinase II Beta) is a Protein Coding gene. Diseases associated with CAMK2B include Phencyclidine Abuse. Among its related pathways are ICos-ICosL Pathway in T-Helper Cell and Development Endothelin-1/EDNRA signaling. GO annotations related to this gene include protein homodimerization activity and protein kinase activity. An important paralog of this gene is CAMK2G.

CAMK2G (Calcium/Calmodulin Dependent Protein Kinase II Gamma) is a Protein Coding gene. Diseases associated with CAMK2G include Timothy Syndrome and Exudative Vitreoretinopathy. Among its related pathways are ICos-ICosL Pathway in T-Helper Cell and Development Endothelin-1/EDNRA signaling. GO annotations related to this gene include protein homodimerization activity and protein kinase activity. An important paralog of this gene is CAMK2B.

CAMK2D (Calcium/Calmodulin Dependent Protein Kinase II Delta) is a Protein Coding gene. Diseases associated with CAMK2D include Dilated Cardiomyopathy and Cardiomyopathy. Among its related pathways are ICos-ICosL Pathway in T-Helper Cell and Development Endothelin-1/EDNRA signaling. GO annotations related to this gene include protein homodimerization activity and protein kinase activity. An important paralog of this gene is CAMK2B.

### For Research Use Only