

beta actin Polyclonal Antibody

catalog number: E-AB-40517

Note: Centrifuge before opening to ensure complete recovery of vial contents.

Description

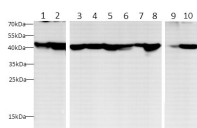
Reactivity	Human;Mouse;Rat;Zebrafish;Monkey
Immunogen	Recombinant human Beta actin protein.
Host	Rabbit
Isotype	IgG
Purification	Antigen Affinity Purification
Conjugation	Unconjugated
Buffer	PBS with 0.05% Proclin300, 1% protective protein and 50% glycerol, pH7.4

Applications

Recommended Dilution

WB	1:1000-2000
IF	1:100-400

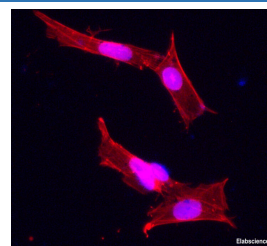
Data



Western blot with anti-beta Actin Polyclonal antibody at dilution of 1:1000. lane 1: HT-29 whole cell lysate, lane 2: Jurkat whole cell lysate, lane 3: Mouse spleen, lane 4: Rat spleen, lane 5: Mouse lung, lane 6: Rat lung, lane 7: RAW264.7 whole cell lysate, lane 8: C6 whole cell lysate, lane 9: Zebrafish, lane 10: Vero

Observed-MW:43 kDa

Calculated-MW:43 kDa



Immunohistochemical analysis of SH-SY5Y, using anti-beta actin Polyclonal Antibody at 1:100 dilution.

Preparation & Storage

Storage	Store at -20°C Valid for 12 months. Avoid freeze / thaw cycles.
Shipping	The product is shipped with ice pack, upon receipt, store it immediately at the temperature recommended.

Background

Beta-actin (ACTB/ACTB) is one of six different actin isoforms in humans. Actins are highly conserved proteins that are involved in cell motility, structure and integrity. Beta actin is a major constituent of the contractile apparatus and one of the