

## Recombinant Human Galectin 9/LGALS9 Protein (His Tag)

**Catalog Number:** PKSH032470

**Note:** *Centrifuge before opening to ensure complete recovery of vial contents.*

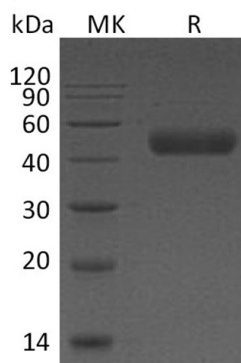
### Description

<b>Species</b>	Human
<b>Source</b>	HEK293 Cells-derived Human Galectin 9;LGALS9 protein Met 1-Thr323, with an C-terminal His
<b>Calculated MW</b>	36.7 kDa
<b>Observed MW</b>	49 kDa
<b>Accession</b>	Q3B8N1-2
<b>Bio-activity</b>	Not validated for activity

### Properties

<b>Purity</b>	> 95 % as determined by reducing SDS-PAGE.
<b>Endotoxin</b>	< 1.0 EU per µg of the protein as determined by the LAL method.
<b>Storage</b>	Generally, lyophilized proteins are stable for up to 12 months when stored at -20 to -80°C. Reconstituted protein solution can be stored at 4-8°C for 2-7 days. Aliquots of reconstituted samples are stable at < -20°C for 3 months.
<b>Shipping</b>	This product is provided as lyophilized powder which is shipped with ice packs.
<b>Formulation</b>	Lyophilized from a 0.2 µm filtered solution of 50mM MOPS, 150mM NaCl, 1mM DTT, 1mM EDTA, 5% Trehalose, pH 7.4. Normally 5% - 8% trehalose, mannitol and 0.01% Tween 80 are added as protectants before lyophilization. Please refer to the specific buffer information in the printed manual.
<b>Reconstitution</b>	Please refer to the printed manual for detailed information.

### Data



> 95 % as determined by reducing SDS-PAGE.

### Background

Galectin-9 is a cytoplasmic protein that contains two galectin domains. Galectin-9 is an S-type lectin that is over-expressed in Hodgkin's disease tissue. Galectin-9 binds galactosides and has high affinity for the Forssman pentasaccharide. Galectin-9 plays a role in thymocyte-epithelial interactions relevant to the biology of the thymus and inhibits cell proliferation. Galectin-9 is a ligand for HAVCR2/TIM3 and induces T-helper type 1 lymphocyte (Th1) death. In addition, Galectin-9 suppresses tumor cell metastasis by interfering with the associations CD44, VCAM-1, Integrin  $\alpha 4\beta 1$ .

### For Research Use Only