

## MPHOSPH6 Polyclonal Antibody

**catalog number: E-AB-66568**

**Note:** Centrifuge before opening to ensure complete recovery of vial contents.

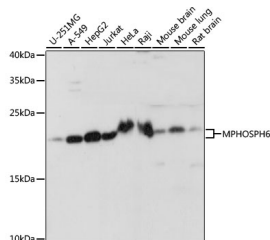
### Description

<b>Reactivity</b>	Human;Mouse;Rat
<b>Immunogen</b>	Recombinant fusion protein of human MPHOSPH6 (NP_005783.2).
<b>Host</b>	Rabbit
<b>Isotype</b>	IgG
<b>Purification</b>	Affinity purification
<b>Buffer</b>	Phosphate buffered solution, pH 7.4, containing 0.05% stabilizer and 50% glycerol.

### Applications

<b>WB</b>	1:500-1:2000
-----------	--------------

### Data



Western blot analysis of extracts of various cell lines using MPHOSPH6 Polyclonal Antibody at dilution of 1:1000.

**Observed-MW:22 kDa/23 kDa**

**Calculated-MW:19 kDa**

### Preparation & Storage

<b>Storage</b>	Store at -20°C Valid for 12 months. Avoid freeze / thaw cycles.
<b>Shipping</b>	The product is shipped with ice pack, upon receipt, store it immediately at the temperature recommended.

### Background

MPHOSPH6 (M-Phase Phosphoprotein 6) is a Protein Coding gene. Among its related pathways are rRNA processing in the nucleus and cytosol and Gene Expression. Gene Ontology (GO) annotations related to this gene include RNA binding.

### For Research Use Only