

Purified Anti-Human IgG Antibody[G18-145]

catalog number: AN010450P

Note: Centrifuge before opening to ensure complete recovery of vial contents.

Description

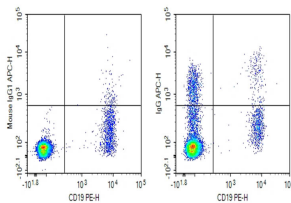
Reactivity	Human
Immunogen	Recombinant Human IgG protein
Host	Mouse
Isotype	Mouse IgG1, κ
Clone	G18-145
Purification	>98%, Protein A/G purified
Buffer	Phosphate-buffered solution, pH 7.2, containing 0.05% non-protein stabilizer. Dialyze to completely remove the stabilizer prior to labeling.

Applications

Recommended Dilution

FCM	2 µg/mL (0.5×10 ⁶ -1×10 ⁶ cells)
------------	--

Data



Human peripheral blood lymphocytes were stained with 0.2 µg Purified Anti-Human IgG Antibody[G18-145] (Right) and 0.2 µg Mouse IgG1, κ Isotype Control (Left), followed by APC-conjugated Goat Anti-Mouse IgG Secondary Antibody, then anti-Human CD19 PE-conjugated Monoclonal Antibody.

Preparation & Storage

Storage	Store at 4°C valid for 12 months or -20°C valid for long term storage, avoid freeze / thaw cycles.
Shipping	Ice bag

Background

IgG is an important component of the humoral immune response, helping to control infection. IgG is produced by plasma B-cells and may be found in extracellular fluids, such as blood, lymph, peritoneal, and cerebrospinal fluids. IgG monomers consist of two light and two heavy chains containing two antigen binding sites. There are four IgG subclasses found in human, mouse and rat species, which include IgG1, IgG2, IgG3 and IgG4. The G18-145 monoclonal antibody specifically binds to the heavy chain of human immunoglobulin G subclasses: IgG1, IgG2, IgG3 and IgG4. The G18-145 antibody has been reported not to react with the heavy chains of other human immunoglobulin isotypes.

For Research Use Only