

## RHCG Polyclonal Antibody

catalog number: **E-AB-53325**

**Note:** Centrifuge before opening to ensure complete recovery of vial contents.

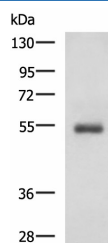
### Description

<b>Reactivity</b>	Human
<b>Immunogen</b>	Synthetic peptide of human RHCG
<b>Host</b>	Rabbit
<b>Isotype</b>	IgG
<b>Purification</b>	Antigen affinity purification
<b>Buffer</b>	Phosphate buffered solution, pH 7.4, containing 0.05% stabilizer and 50% glycerol.

### Applications

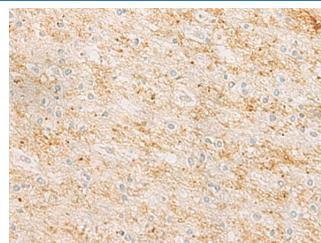
Applications	Recommended Dilution
<b>WB</b>	1:500-1:2000
<b>IHC</b>	1:25-1:50

### Data



Western blot analysis of Human 2-3 grade invasive ductal breast tissue lysate using RHCG Polyclonal Antibody at dilution of 1:600

**Observed-MW:Refer to figures**  
**Calculated-MW:53 kDa**



Immunohistochemistry of paraffin-embedded Human brain tissue using RHCG Polyclonal Antibody at dilution of 1:25 (x200)

### Preparation & Storage

<b>Storage</b>	Store at -20°C Valid for 12 months. Avoid freeze / thaw cycles.
<b>Shipping</b>	The product is shipped with ice pack, upon receipt, store it immediately at the temperature recommended.

### Background

RHCG (Rhesus blood group family type C glycoprotein), also known as RHGK (Rh glycoprotein kidney), PDRC2 (tumor-related protein DRC2) or SLC42A3, is a multi-pass membrane protein with three potential N-glycosylation sites that belongs to the Rh subfamily of the ammonium transporter family. Expressed in a wide variety of tissues with predominant expression in adult and fetal kidney, RHCG localizes to the apical and/or basolateral cell membrane (depending on the species) and is believed to function as a non-erythroid, bidirectional, electroneutral ammonium transporter.

### For Research Use Only