

METTL17 Polyclonal Antibody

catalog number: E-AB-19838

Note: Centrifuge before opening to ensure complete recovery of vial contents.

Description

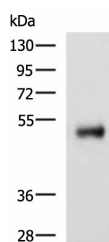
Reactivity	Human;Mouse
Immunogen	Synthetic peptide of human METTL17
Host	Rabbit
Isotype	IgG
Purification	Antigen affinity purification
Conjugation	Unconjugated
Buffer	Phosphate buffered solution, pH 7.4, containing 0.05% stabilizer and 50% glycerol.

Applications

Recommended Dilution

WB	1:500-1:2000
IHC	1:20-1:100

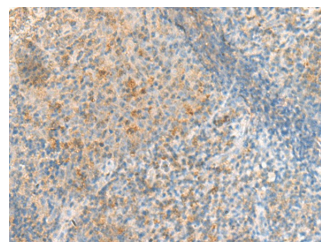
Data



Western blot analysis of Human colorectal cancer tissue lysate using METTL17 Polyclonal Antibody at dilution of 1:800

Observed-MV:Refer to figures

Calculated-MV:51 kDa



Immunohistochemistry of paraffin-embedded Human tonsil tissue using METTL17 Polyclonal Antibody at dilution of 1:50(×200)

Preparation & Storage

Storage	Store at -20°C Valid for 12 months. Avoid freeze / thaw cycles.
Shipping	The product is shipped with ice pack,upon receipt,store it immediately at the temperature recommended.

Background

May be a component of the mitochondrial small ribosomal subunit.