

## ERCC1 Polyclonal Antibody

catalog number: E-AB-19768

**Note:** Centrifuge before opening to ensure complete recovery of vial contents.

### Description

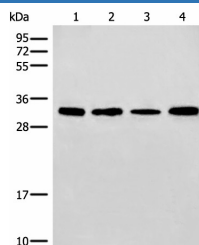
<b>Reactivity</b>	Human;Mouse
<b>Immunogen</b>	Synthetic peptide of human ERCC1
<b>Host</b>	Rabbit
<b>Isotype</b>	IgG
<b>Purification</b>	Antigen affinity purification
<b>Conjugation</b>	Unconjugated
<b>Buffer</b>	Phosphate buffered solution, pH 7.4, containing 0.05% stabilizer and 50% glycerol.

### Applications

### Recommended Dilution

<b>WB</b>	1:500-1:2000
-----------	--------------

### Data



Western blot analysis of 293T and NIH/3T3 cell Mouse liver tissue lysates using ERCC1 Polyclonal Antibody at dilution of 1:600

**Observed-MW:Refer to figures**

**Calculated-MW:33 kDa**

### Preparation & Storage

<b>Storage</b>	Store at -20°C Valid for 12 months. Avoid freeze / thaw cycles.
<b>Shipping</b>	The product is shipped with ice pack,upon receipt,store it immediately at the temperature recommended.

### Background

Excision Repair Cross Complementing 1 (ERCC1) is a structure-specific endonuclease that is responsible for the 5'-incision during DNA repair. It forms a complex with ERCC11,XPF and ERCC4,which are required in both recombinatorial repair and nucleotide excision repair. It has been found that ERCC1,together with RRM1,are determinants of survival after surgical treatment of early-stage,non-small-cell lung cancer. (Ref: Simon,ER. 2005)