

## PE Anti-Human HLA-DP Antibody[B7/21]

**Catalog Number:** AN00566D

**Note:** Centrifuge before opening to ensure complete recovery of vial contents.

### Description

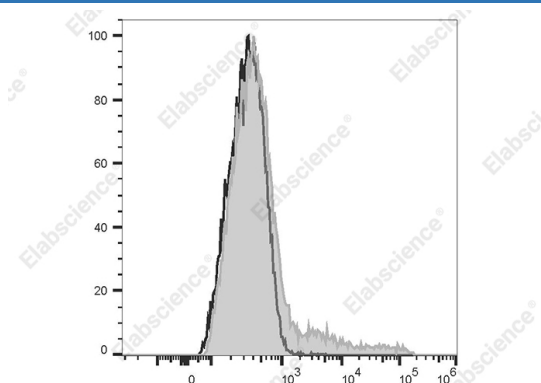
<b>Reactivity</b>	Human
<b>Host</b>	Mouse
<b>Isotype</b>	Mouse IgG3
<b>Clone No.</b>	B7/21
<b>Isotype Control</b>	PE Mouse IgG3, $\kappa$ Isotype Control[A112-3] [Product E-AB-F09752D]
<b>Conjugation</b>	PE
<b>Conjugation Information</b>	PE is designed to be excited by the Blue (488 nm), Green (532 nm) and Yellow-Green (561 nm) lasers and detected using an optical filter centered near 575 nm (e.g., a 585/42 nm bandpass filter).
<b>Storage Buffer</b>	Phosphate buffered solution, pH 7.2, containing 0.09% stabilizer and 1% protein protectant

### Applications

### Recommended usage

<b>FCM</b>	Each lot of this antibody is quality control tested by flow cytometric analysis. <b>The amount of the reagent is suggested to be used 5 <math>\mu</math>L of antibody per test (million cells in 100 <math>\mu</math>L staining volume or per 100 <math>\mu</math>L of whole blood).</b> Please check your vial before the experiment. Since applications vary, the appropriate dilutions must be determined for individual use.
------------	--

### Data



Staining of normal human peripheral blood cells with PE Anti-Human HLA-DP Antibody[B7/21](filled gray histogram) or PE Mouse IgG3 Isotype Control (empty black histogram). Cells in the lymphocytes gate were used for analysis.

### Preparation & Storage

<b>Storage</b>	Keep as concentrated solution. This product can be stored at 2-8°C for 12 months. Please protected from prolonged exposure to light and do not freeze.
<b>Shipping</b>	Ice bag

### Antigen Information

<b>Alternate Names</b>	MHC class II;Major Histocompatibility complex II;human leukocyte antigen
<b>Uniprot ID</b>	P20036

### For Research Use Only

**Gene ID**

3113

**Background**

HLA-DP is heterodimeric cell surface glycoproteins comprised of an  $\alpha$  (heavy) chain and a  $\beta$  (light) chain. It is expressed on B cells, activated T cells, monocytes/macrophages, dendritic cells, and other non-professional APCs.

**For Research Use Only**