

## RPP30 Polyclonal Antibody

catalog number: **E-AB-62351**

**Note:** Centrifuge before opening to ensure complete recovery of vial contents.

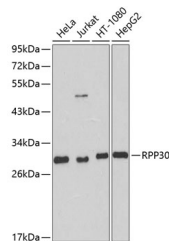
### Description

<b>Reactivity</b>	Human;Mouse;Rat
<b>Immunogen</b>	Recombinant fusion protein of human RPP30 (NP_006404.1).
<b>Host</b>	Rabbit
<b>Isotype</b>	IgG
<b>Purification</b>	Affinity purification
<b>Buffer</b>	Phosphate buffered solution, pH 7.4, containing 0.05% stabilizer and 50% glycerol.

### Applications

Applications	Recommended Dilution
<b>WB</b>	1:500-1:2000
<b>IHC</b>	1:100-1:200

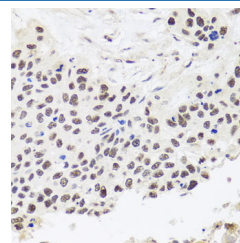
### Data



Western blot analysis of extracts of various cell lines using RPP30 Polyclonal Antibody at dilution of 1:1000.

**Observed-MW:29 kDa**

**Calculated-MW:29 kDa/35 kDa**



Immunohistochemistry of paraffin-embedded Human lung cancer using RPP30 Polyclonal Antibody at dilution of 1:100 (40x lens).

### Preparation & Storage

<b>Storage</b>	Store at -20°C Valid for 12 months. Avoid freeze / thaw cycles.
<b>Shipping</b>	The product is shipped with ice pack, upon receipt, store it immediately at the temperature recommended.

### Background

RPP30 (Ribonuclease P/MRP Subunit P30) is a Protein Coding gene. Diseases associated with RPP30 include Hydrolethalus Syndrome 1 and Entropion. Among its related pathways are rRNA processing in the nucleus and cytosol and tRNA processing. Gene Ontology (GO) annotations related to this gene include ribonuclease P activity.

### For Research Use Only