

TAGLN Polyclonal Antibody

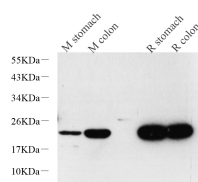
catalog number: E-AB-70234

Note: Centrifuge before opening to ensure complete recovery of vial contents.

Description	
Reactivity	Human;Mouse;Rat
Immunogen	KLH conjugated Synthetic peptide corresponding to Mouse SM22 α
Host	Rabbit
Isotype	IgG
Purification	Affinity purification
Conjugation	Unconjugated
Buffer	Phosphate buffered solution, pH 7.4, containing 0.05% stabilizer, 1% protein protectant and 50% glycerol.

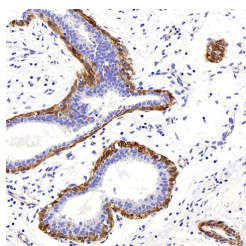
Applications	Recommended Dilution
WB	1:500-1:2000
IHC	1:300-1:800

Data

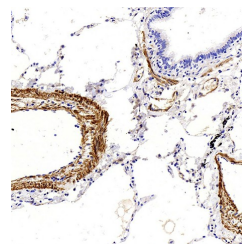
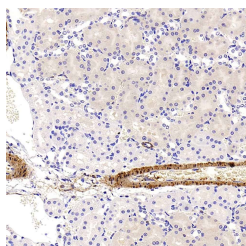


Western Blot analysis of various samples using TAGLN Polyclonal Antibody at dilution of 1:600.

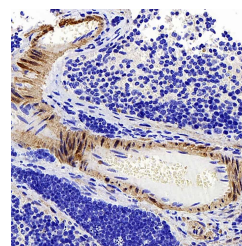
Observed-MW:22 kDa
Calculated-MW:22 kDa



Immunohistochemistry analysis of paraffin-embedded human breast cancer using TAGLN Polyclonal Antibody at dilution of 1:400.



Immunohistochemistry analysis of paraffin-embedded human lung cancer using TAGLN Polyclonal Antibody at dilution of 1:400.



Immunohistochemistry analysis of paraffin-embedded mouse spleen using TAGLN Polyclonal Antibody at dilution of 1:400.

Immunohistochemistry analysis of paraffin-embedded Rat kidney using TAGLN Polyclonal Antibody at dilution of 1:400.

Preparation & Storage

Storage

Store at -20°C Valid for 12 months. Avoid freeze / thaw cycles.

Shipping

The product is shipped with ice pack, upon receipt, store it immediately at the temperature recommended.

Background

The transgelin family is a group of proteins that belong to 22kd actin-related corpnin superfamily. Of all three isoforms, transgelin 1 is the best characterized. Transgelin 1, also known as SM22alpha, is a specific marker for differentiated smooth muscle cells. Transgelin 2, also known as SM22 beta, is expressed by both smooth muscle and non-smooth muscle cells in a temporally and spatially regulated pattern. Transgelin 3, also known as NP25, is only found in highly differentiated neuronal cells.