

## LDHB Polyclonal Antibody

**catalog number: E-AB-40383**

**Note:** Centrifuge before opening to ensure complete recovery of vial contents.

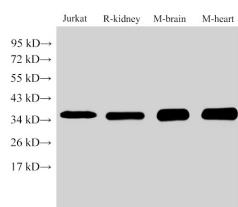
### Description

<b>Reactivity</b>	Human;Mouse;Rat
<b>Immunogen</b>	Recombinant Human L-lactate dehydrogenase B chain protein
<b>Host</b>	Rabbit
<b>Isotype</b>	IgG
<b>Purification</b>	Antigen Affinity Purification
<b>Buffer</b>	PBS with 0.05% Proclin300, 1% protective protein and 50% glycerol, pH7.4

### Applications Recommended Dilution

<b>WB</b>	1:500-1:2000
-----------	--------------

### Data



Western Blot analysis of 1)Jurkat, 2)Rat kidney, 3)Mouse brain, 4)Mouse heart using LDHB Polyclonal Antibody at dilution of 1:1000.

**Observed-MW:36 kDa**

**Calculated-MW:36 kDa**

### Preparation & Storage

<b>Storage</b>	Store at -20°C Valid for 12 months. Avoid freeze / thaw cycles.
<b>Shipping</b>	The product is shipped with ice pack,upon receipt,store it immediately at the temperature recommended.

### Background

LDHB,also named as LDH-H and NY-REN-46,belongs to the LDH/MDH superfamily. And LDH family. It is an enzyme which catalyzes the reversible conversion of lactate and pyruvate,and NAD and NADH,in the glycolytic pathway.It is glycolytic enzymes and it is positively regulated by mTOR.

### For Research Use Only