

Recombinant Tuberin Monoclonal Antibody

catalog number: **AN300670L**

Note: *Centrifuge before opening to ensure complete recovery of vial contents.*

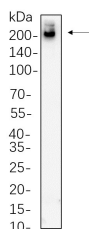
Description

Reactivity	Human;Mouse;Rat
Immunogen	Recombinant Human Tuberin protein
Host	Rabbit
Isotype	IgG, κ
Clone	2C8
Purification	Protein A
Buffer	PBS, 50% glycerol, 0.05% Proclin 300, 0.05% protein protectant.

Applications Recommended Dilution

WB	1:2000-1:10000
-----------	----------------

Data



Western Blot with Recombinant Tuberin Monoclonal Antibody at dilution of 1:1000 dilution. Lane A: SH-SY5Y whole cell lysate.

Observed-MW:201 kDa

Calculated-MW:201 kDa

Preparation & Storage

Storage	Store at -20°C Valid for 12 months. Avoid freeze / thaw cycles.
Shipping	Ice bag

Background

Mutations in this gene lead to tuberous sclerosis complex. Its gene product is believed to be a tumor suppressor and is able to stimulate specific GTPases. The protein associates with hamartin in a cytosolic complex, possibly acting as a chaperone for hamartin. Alternative splicing results in multiple transcript variants encoding different isoforms.

For Research Use Only