

(KO Validated) NUCB1 Polyclonal Antibody

catalog number: E-AB-65460

Note: Centrifuge before opening to ensure complete recovery of vial contents.

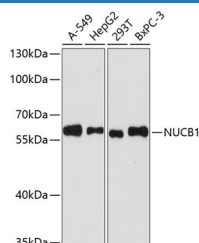
Description

Reactivity	Human;Mouse;Rat
Immunogen	Recombinant fusion protein of human NUCB1 (NP_006175.2).
Host	Rabbit
Isotype	IgG
Purification	Affinity purification
Buffer	Phosphate buffered solution, pH 7.4, containing 0.05% stabilizer and 50% glycerol.

Applications

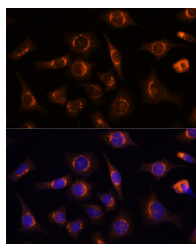
WB	1:500-1:2000
IF	1:50-1:100

Data

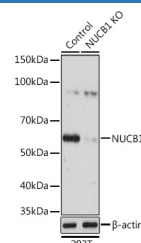


Western blot analysis of extracts of various cell lines using NUCB1 Polyclonal Antibody at dilution of 1:3000.

Observed-MV:60 kDa
Calculated-MV:53 kDa

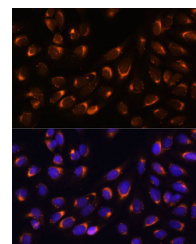


Immunofluorescence analysis of L929 cells using NUCB1 Polyclonal Antibody at dilution of 1:100 (40x lens). Blue: DAPI for nuclear staining.



Western blot analysis of extracts from normal (control) and NUCB1 knockout (KO) 293T cells using NUCB1 Polyclonal Antibody at dilution of 1:3000.

Observed-MV:60 kDa
Calculated-MV:53 kDa



Immunofluorescence analysis of U-2 OS cells using NUCB1 Polyclonal Antibody at dilution of 1:100 (40x lens). Blue: DAPI for nuclear staining.

Preparation & Storage

Storage	Store at -20°C Valid for 12 months. Avoid freeze / thaw cycles.
Shipping	The product is shipped with ice pack, upon receipt, store it immediately at the temperature recommended.

Background

This gene encodes a member of a small calcium-binding EF-hand protein family. The encoded protein is thought to have a key role in Golgi calcium homeostasis and Ca(2+)-regulated signal transduction events.

For Research Use Only