

Recombinant Human IL-1 beta/IL1B Protein

Catalog Number: PKSH031839

Note: Centrifuge before opening to ensure complete recovery of vial contents.

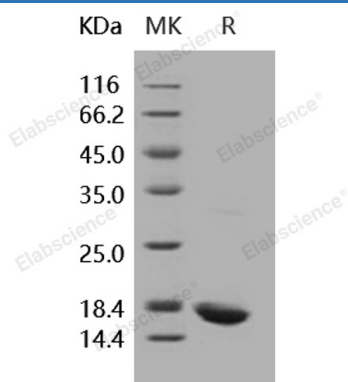
Description

Species	Human
Source	E.coli-derived Human IL-1 protein Ala 117-Ser 269
Calculated MW	17 kDa
Observed MW	17 kDa
Accession	NP_000567.1
Bio-activity	Measured by its ability to induce Interferon gamma secretion by human natural killer lymphoma NK-92 cells. The ED ₅₀ for this effect is typically 0.2-2 ng/mL.

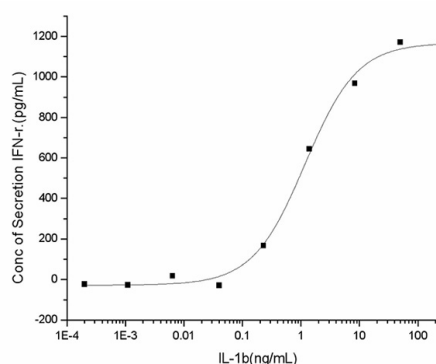
Properties

Purity	> 95 % as determined by reducing SDS-PAGE.
Endotoxin	Please contact us for more information.
Storage	Generally, lyophilized proteins are stable for up to 12 months when stored at -20 to -80 °C. Reconstituted protein solution can be stored at 4-8°C for 2-7 days. Aliquots of reconstituted samples are stable at < -20°C for 3 months.
Shipping	This product is provided as lyophilized powder which is shipped with ice packs.
Formulation	Lyophilized from sterile PBS, pH 7.4 Normally 5% - 8% trehalose, mannitol and 0.01% Tween 80 are added as protectants before lyophilization. Please refer to the specific buffer information in the printed manual.
Reconstitution	Please refer to the printed manual for detailed information.

Data



> 95 % as determined by reducing SDS-PAGE.



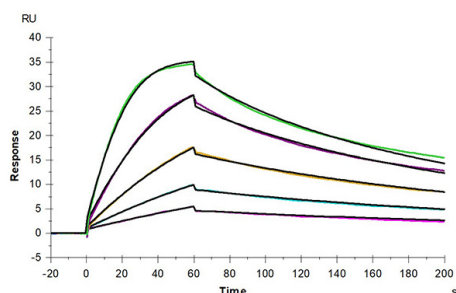
Measured by its ability to induce Interferon gamma secretion by human natural killer lymphoma NK-92 cells. The ED₅₀ for this effect is typically 0.2-2 ng/mL.

For Research Use Only

Toll-free: 1-888-852-8623
Web: www.elabscience.com

Tel: 1-832-243-6086
Email: techsupport@elabscience.com

Fax: 1-832-243-6017



Recombinant Human IL1R1 Protein, hFc Tag (PKSH031849) captured on Protein A chip, can bind Recombinant Human IL-1 beta Protein (PKSH031839) with an affinity constant of 0.942 nM as determined in an SPR assay (Biacore T200) .

Background

Interleukin-1 beta (IL1 beta or IL1B) also known as catabolin, is a member of the interleukin 1 cytokine family. IL1 is a pleiotropic cytokine. It is involved in the inflammatory response, cell growth, and tissue repair in the cortex. The IL1 superfamily consists of three members, IL1A (IL1 alpha), IL1B (IL1 beta), and IL1 receptor antagonist (IL1Ra). In clinical, it has been reported that Interleukin (IL)-1 may influence Th1 / Th2 immune responsiveness and has been implicated in the establishment of successful pregnancy. Proinflammatory interleukin (IL)-1 gene polymorphisms associated with high levels of IL-1beta activity increase the risk for hypochlorhydria and distal gastric carcinoma. IL1B polymorphisms may be involved in susceptibility to SSc. Moreover, the IL2-384-G allele may be a marker for the limited phenotype of systemic sclerosis (SSc).