

Recombinant Mouse IL1R2/CD121b Protein (Fc Tag)

Catalog Number: PKSM041049

Note: Centrifuge before opening to ensure complete recovery of vial contents.

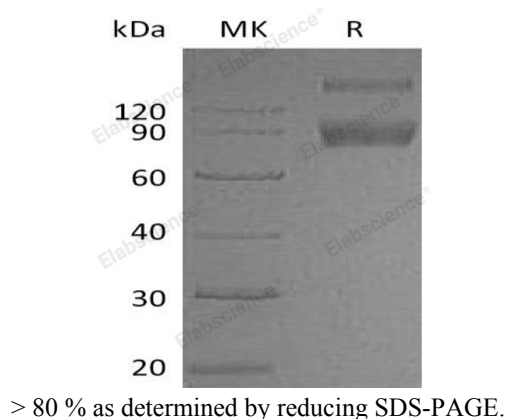
Description

Species	Mouse
Source	HEK293 Cells-derived Mouse IL1R2/CD121b protein Phe14-Glu355 , with an C-terminal Fc
Calculated MW	64.9 kDa
Observed MW	85-110 kDa
Accession	P27931
Bio-activity	Not validated for activity

Properties

Purity	> 80 % as determined by reducing SDS-PAGE.
Endotoxin	< 1.0 EU per µg of the protein as determined by the LAL method.
Storage	Generally, lyophilized proteins are stable for up to 12 months when stored at -20 to -80 °C. Reconstituted protein solution can be stored at 4-8°C for 2-7 days. Aliquots of reconstituted samples are stable at < -20°C for 3 months.
Shipping	This product is provided as lyophilized powder which is shipped with ice packs.
Formulation	Lyophilized from a 0.2 µm filtered solution of PBS, pH 7.4. Normally 5% - 8% trehalose, mannitol and 0.01% Tween 80 are added as protectants before lyophilization.
Reconstitution	Please refer to the specific buffer information in the printed manual. Please refer to the printed manual for detailed information.

Data



Background

Mouse Interleukin 1 receptor, type II (IL1R2) is a cytokine receptor that belongs to the interleukin-1 receptor family. This protein binds interleukin alpha (IL1A), interleukin beta (IL1B), and interleukin 1 receptor, type I (IL1R1/IL1RA), and acts as a decoy receptor that inhibits the activity of its ligands. IL-1R2 structurally consisting of a ligand binding portion comprised of three Ig-like domains, a single transmembrane region, and a short cytoplasmic domain. It is expressed in a variety of cell types including B lymphocytes, neutrophils, monocytes, large granular leukocytes and endothelial cells. Mouse IL1RII shares 59% amino acid sequence homology with human IL1 RII in their extracellular domains. The pleiotropic cytokine IL1 is produced to regulate development and maintenance of the inflammatory responses, and binds to specific plasma membrane receptors on cells. Two distinct types of IL1 receptors which are able to bind IL1 specifically have been identified, designated as IL1RI (IL1RA) and IL1RII (IL1RB). IL1R1 contributes to IL-1 signaling, whereas the IL-1R2 has no signaling property and acts as a decoy for IL-1.