

Filamin-c Polyclonal Antibody

catalog number: E-AB-40582

Note: Centrifuge before opening to ensure complete recovery of vial contents.

Description

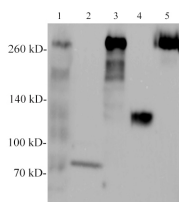
Reactivity	Human;Mouse;Rat
Immunogen	Recombinant Human Filamin-c protein expressed by E.coli.
Host	Rabbit
Isotype	IgG
Purification	Antigen Affinity Purification
Conjugation	Unconjugated
buffer	PBS with 0.05% proclin 300, 1% protective protein and 50% glycerol,pH7.4

Applications

Recommended Dilution

WB 1:500-1000

Data



Western blotting with anti-Filamin-c polyclonal antibody at dilution of 1:500. Lane 1: Mouse skeletal muscle lysate, Lane 2: Mouse liver lysate (Negative), lane 3: Rat skeletal muscle lysate, Lane 4:Rat liver lysate (Negative), Lane 5: HeLa cell lysate.

Observed-MV:290 kDa

Calculated-MV:291 kDa

Preparation & Storage

Storage	Store at -20°C Valid for 12 months. Avoid freeze / thaw cycles.
Shipping	The product is shipped with ice pack,upon receipt,store it immediately at the temperature recommended.

Background

FLNC, Filamin-c, Filamin-2 (FLN2), Actin binding-like protein (APBL) (290.8 kDa) is an isoform of the Filamin proteins family. Filamins are broadly expressed and function as actin-binding and actin-crosslinking proteins. Structurally, Filamins consist of three main domains; N-terminal actin-binding domain, multiple central immunoglobulin (Ig) domains, and a C-terminal domain which supports homodimerization.

For Research Use Only