

# Recombinant Human HDGF Protein (His Tag)

Catalog Number:PKSH032539



**Note:** Centrifuge before opening to ensure complete recovery of vial contents.

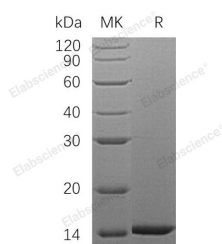
## Description

<b>Synonyms</b>	Hepatoma-Derived Growth Factor;HDGF;High Mobility Group Protein 1-Kike 2;HMG-1L2;HDGF;HMG1L2
<b>Species</b>	Human
<b>Expression Host</b>	E.coli
<b>Sequence</b>	Met 1-Tyr100
<b>Accession</b>	P51858
<b>Calculated Molecular Weight</b>	12.6 kDa
<b>Observed molecular weight</b>	14 kDa
<b>Tag</b>	C-His

## Properties

<b>Purity</b>	> 95 % as determined by reducing SDS-PAGE.
<b>Endotoxin</b>	< 1.0 EU per µg of the protein as determined by the LAL method.
<b>Storage</b>	Generally, lyophilized proteins are stable for up to 12 months when stored at -20 to -80°C. Reconstituted protein solution can be stored at 4-8°C for 2-7 days. Aliquots of reconstituted samples are stable at < -20°C for 3 months.
<b>Shipping</b>	This product is provided as lyophilized powder which is shipped with ice packs.
<b>Formulation</b>	Lyophilized from a 0.2 µm filtered solution of 20mM Tris-HCl, 1mM DTT, 1mM EDTA, pH 7.5. Normally 5 % - 8 % trehalose, mannitol and 0.01 % Tween80 are added as protectants before lyophilization. Please refer to the specific buffer information in th
<b>Reconstitution</b>	Please refer to the printed manual for detailed information.

## Data



> 95 % as determined by reducing SDS-PAGE.

## Background

Hepatoma-Derived Growth Factor is a original member of the HDGF family. HDGF is a cytoplasmic protein and contains one PWWP domain. HDGF expression levels are high in the nucleus and cytoplasm of smooth muscle and endothelial cells. HDGF has proliferative, angiogenic and neurotrophic activity. HDGF was initially characterized as a secreted mitogen from the Huh-7 human hepatoma cell line. As a heparin-binding protein, which is highly expressed in tumor cells where it stimulates proliferation. HDGF has mitogenic activity for fibroblasts and acts as a transcriptional repressor. It has been shown that HDGF is linked with tumorigenesis and the growth of cancer.

## For Research Use Only

A Reliable Research Partner in Life Science and Medicine

Toll-free: 1-888-852-8623

Web: [www.elabscience.com](http://www.elabscience.com)

Tel: 1-832-243-6086

Email: [techsupport@elabscience.com](mailto:techsupport@elabscience.com)

Fax: 1-832-243-6017