

Recombinant Human Dipeptidase 1/DPEP1 Protein (His Tag)



Catalog Number:PKSH032356

Note: Centrifuge before opening to ensure complete recovery of vial contents.

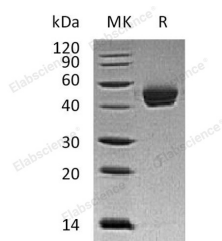
Description

Synonyms	Dipeptidase 1;Dehydropeptidase-I;Microsomal Dipeptidase;Renal Dipeptidase;hRDP;DPEP1;MDP;RDP;MBD1
Species	Human
Expression Host	HEK293 Cells
Sequence	Asp17-Ser385
Accession	P16444
Calculated Molecular Weight	42.1 kDa
Observed molecular weight	41 kDa
Tag	C-His

Properties

Purity	> 95 % as determined by reducing SDS-PAGE.
Endotoxin	< 1.0 EU per µg of the protein as determined by the LAL method.
Storage	Store at < -20°C, stable for 6 months. Please minimize freeze-thaw cycles.
Shipping	This product is provided as liquid. It is shipped at frozen temperature with blue ice/gel packs. Upon receipt, store it immediately at < - 20°C.
Formulation	Supplied as a 0.2 µm filtered solution of PBS, 10% Glycerol, pH 7.4.
Reconstitution	Not Applicable

Data



> 95 % as determined by reducing SDS-PAGE.

Background

Dipeptidase 1 (DPEP1) is a kidney membrane enzyme that belongs to the peptidase M19 family. DPEP1 is a homodimer and is inhibited by L-penicillamine. DPEP1 hydrolyzes a variety of dipeptides and is implicated in renal metabolism of glutathione and its conjugates. DPEP1 is responsible for hydrolysis of the beta-lactam ring of antibiotics; such as penem and carbapenem. DPEP1 may play an important role in the regulation of leukotriene activity. DPEP1 expression in cancer is significantly higher than that in normal tissue. However; DPEP1 expression decreased with pathological differentiation; lymph-node and distant metastasis.

For Research Use Only

A Reliable Research Partner in Life Science and Medicine

Toll-free: 1-888-852-8623

Web: www.elabscience.com

Tel: 1-832-243-6086

Email: techsupport@elabscience.com

Fax: 1-832-243-6017