

MRPL39 Polyclonal Antibody

catalog number: E-AB-11406

Note: Centrifuge before opening to ensure complete recovery of vial contents.

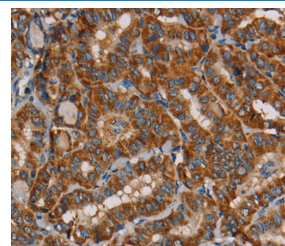
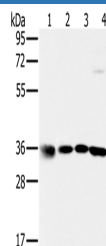
Description

Reactivity	Human;Mouse
Immunogen	Recombinant protein of human MRPL39
Host	Rabbit
Isotype	IgG
Purification	Affinity purification
Buffer	Phosphate buffered solution, pH 7.4, containing 0.05% stabilizer and 50% glycerol.

Applications

Applications	Recommended Dilution
WB	1:1000-1:5000
IHC	1:50-1:200

Data



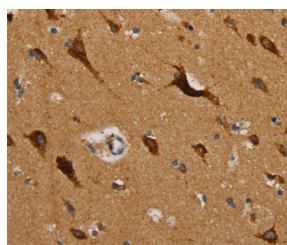
Western Blot analysis of 293T, K562, 231 and hela cell using Immunohistochemistry of paraffin-embedded Human thyroid cancer using MRPL39 Polyclonal Antibody at dilution of

MRPL39 Polyclonal Antibody at dilution of 1:600

cancer using MRPL39 Polyclonal Antibody at dilution of

Calculated-MW:39 kDa

1:45



Immunohistochemistry of paraffin-embedded Human brain using MRPL39 Polyclonal Antibody at dilution of 1:45

Preparation & Storage

Storage	Store at -20°C Valid for 12 months. Avoid freeze / thaw cycles.
Shipping	The product is shipped with ice pack, upon receipt, store it immediately at the temperature recommended.

Background

Mammalian mitochondrial ribosomal proteins are encoded by nuclear genes and help in protein synthesis within the mitochondrion. Mitochondrial ribosomes (mitoribosomes) consist of a small 28S subunit and a large 39S subunit. They have an estimated 75% protein to rRNA composition compared to prokaryotic ribosomes, where this ratio is reversed. Another difference between mammalian mitoribosomes and prokaryotic ribosomes is that the latter contain a 5S rRNA.

For Research Use Only