

# Recombinant Human ALDOC Protein (His Tag)

Catalog Number:PKSH032461



**Note:** Centrifuge before opening to ensure complete recovery of vial contents.

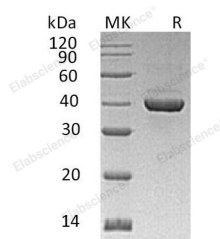
## Description

<b>Synonyms</b>	Fructose-bisphosphate aldolase C;Brain-type aldolase;ALDC;Aldo3;Aldolase C;Scrg2;zebrin II
<b>Species</b>	Human
<b>Expression Host</b>	HEK293 Cells
<b>Sequence</b>	Phe2-Tyr364
<b>Accession</b>	P09972
<b>Calculated Molecular Weight</b>	40.3 kDa
<b>Observed molecular weight</b>	40 kDa
<b>Tag</b>	C-His

## Properties

<b>Purity</b>	> 95 % as determined by reducing SDS-PAGE.
<b>Endotoxin</b>	< 1.0 EU per µg of the protein as determined by the LAL method.
<b>Storage</b>	Store at < -20°C, stable for 6 months. Please minimize freeze-thaw cycles.
<b>Shipping</b>	This product is provided as liquid. It is shipped at frozen temperature with blue ice/gel packs. Upon receipt, store it immediately at < - 20°C.
<b>Formulation</b>	Supplied as a 0.2 µm filtered solution of 20mM Tris-HCl, 100mM NaCl, 50% Glycerol, pH8.0.
<b>Reconstitution</b>	Not Applicable

## Data



> 95 % as determined by reducing SDS-PAGE.

## Background

Fructose-bisphosphate aldolase C (ALDOC) belongs to the class I fructose-bisphosphate aldolase family. It is an enzyme that, in humans, is encoded by the ALDOC gene. ALDOC is expressed exclusively in the hippocampus and Purkinje cells of the brain. ALDOC is a glycolytic enzyme which catalyzes the reversible aldol cleavage of fructose-1,6-biphosphate and fructose 1-phosphate to dihydroxyacetone phosphate and either glyceraldehyde-3-phosphate or glyceraldehydes respectively

## For Research Use Only

A Reliable Research Partner in Life Science and Medicine

Toll-free: 1-888-852-8623

Web: [www.elabscience.com](http://www.elabscience.com)

Tel: 1-832-243-6086

Email: [techsupport@elabscience.com](mailto:techsupport@elabscience.com)

Fax: 1-832-243-6017