

# CD54 Polyclonal Antibody

catalog number: E-AB-70046

**Note:** Centrifuge before opening to ensure complete recovery of vial contents.

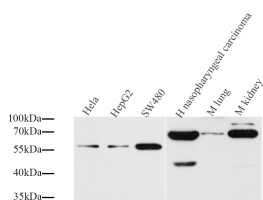
## Description

<b>Reactivity</b>	Human;Mouse;Rat
<b>Immunogen</b>	KLH conjugated Synthetic peptide corresponding to Mouse ICAM-1
<b>Host</b>	Rabbit
<b>Isotype</b>	IgG
<b>Purification</b>	Affinity purification
<b>Conjugation</b>	Unconjugated
<b>buffer</b>	Phosphate buffered solution, pH 7.4, containing 0.05% stabilizer, 1% protein protectant and 50% glycerol.

## Applications

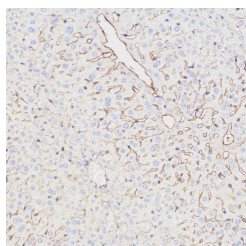
Applications	Recommended Dilution
<b>WB</b>	1:1000-1:3000
<b>IHC</b>	1:500-1:1000
<b>IF</b>	1:200-1:800

## Data

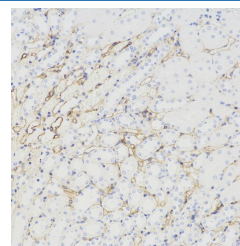


Western Blot analysis of various samples using CD54 Polyclonal Antibody at dilution of 1:1000.

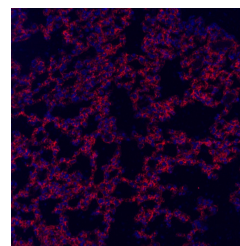
**Observed-MV:58 kDa**  
**Calculated-MV:58 kDa**



Immunohistochemistry analysis of paraffin-embedded Mouse liver using CD54 Polyclonal Antibody at dilution of 1:500.



Immunohistochemistry analysis of paraffin-embedded mouse kidney using CD54 Polyclonal Antibody at dilution of 1:500.



Immunofluorescence analysis of paraffin-embedded mouse lung using CD54 Polyclonal Antibody at dilution of 1:300.

## Preparation & Storage

<b>Storage</b>	Store at -20°C Valid for 12 months. Avoid freeze / thaw cycles.
<b>Shipping</b>	The product is shipped with ice pack, upon receipt, store it immediately at the temperature recommended.

## Background

## For Research Use Only

# CD54 Polyclonal Antibody

catalog number: E-AB-70046



ICAM-1 (CD54) is a 90-kDa transmembrane glycoprotein of the immunoglobulin superfamily and is critical for the firm attachment and transmigration of leukocytes out of blood vessels and into tissues . ICAM-1 is expressed by several cell types, typically on endothelial cells and cells of the immune system, and its expression can be up-regulated by various stimuli, including TNF- $\alpha$ , INF- $\gamma$ , IL-1 and thrombin . It is a ligand for LFA-1 and Mac-1, serves as a receptor for rhinovirus, and is one of several receptors used by Plasmodium falciparum .

## For Research Use Only

A Reliable Research Partner in Life Science and Medicine  
Tel: 400-999-2100

Email: [techsupport@elabscience.cn](mailto:techsupport@elabscience.cn)

Web: [www.elabscience.cn](http://www.elabscience.cn)

Rev. V1.7