

Recombinant Human OX-2/MOX1/CD200 Protein (His Tag)

Catalog Number: PKSH032840



Note: Centrifuge before opening to ensure complete recovery of vial contents.

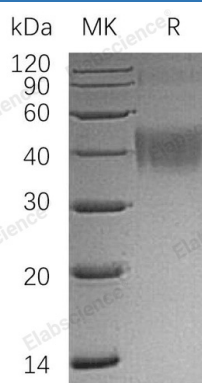
Description

Species	Human
Mol_Mass	23.5 kDa
Accession	P41217
Bio-activity	Not validated for activity

Properties

Purity	> 95 % as determined by reducing SDS-PAGE.
Endotoxin	< 1.0 EU per µg of the protein as determined by the LAL method.
Storage	Generally, lyophilized proteins are stable for up to 12 months when stored at -20 to -80 °C. Reconstituted protein solution can be stored at 4-8°C for 2-7 days. Aliquots of reconstituted samples are stable at < -20°C for 3 months.
Shipping	This product is provided as lyophilized powder which is shipped with ice packs.
Formulation	Lyophilized from a 0.2 µm filtered solution of 20mM PB, 150mM NaCl, pH 7.4. Normally 5% - 8% trehalose, mannitol and 0.01% Tween 80 are added as protectants before lyophilization. Please refer to the specific buffer information in the printed manual.
Reconstitution	Please refer to the printed manual for detailed information.

Data



> 95 % as determined by reducing SDS-PAGE.

Background

CD200 is a transmembrane immunoregulatory protein that belongs to the immunoglobulin superfamily. It contains one Ig like V type domain and one Ig like C2 type domain in its extracellular domain. CD200 is widely but not ubiquitously expressed. Its receptor (CD200R) is restricted primarily to mast cells; basophils; macrophages; and dendritic cells; which suggests myeloid cell regulation as the major function of CD200. CD200 and CD200R associate via their respective N-terminal Ig-like domains. In myeloid cells; CD200R initiates inhibitory signals following receptor-ligand contact. In T cell s; CD200 functions as a co-stimulatory molecule independent of the CD28 pathway. In addition; CD200 also plays an important role in prevention of graft rejection; autoimmune diseases and spontaneous abortion.

For Research Use Only

A Reliable Research Partner in Life Science and Medicine
Tel:400-999-2100

Email:techsupport@elabscience.cn

Web:www.elabscience.cn

Rev. V3.5