

ORAI1 Polyclonal Antibody

catalog number: **E-AB-92770**

Note: Centrifuge before opening to ensure complete recovery of vial contents.

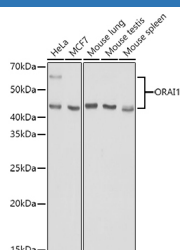
Description

Reactivity	Human;Mouse;Rat
Immunogen	A synthetic peptide of human ORAI1
Host	Rabbit
Isotype	IgG
Purification	Affinity purification
Buffer	Phosphate buffered solution, pH 7.4, containing 0.05% stabilizer and 50% glycerol.

Applications Recommended Dilution

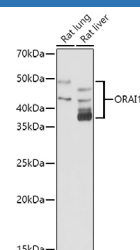
WB	1:200-1:2000
-----------	--------------

Data



Western blot analysis of extracts of various cell lines using ORAI1 Polyclonal Antibody at 1:1000 dilution.

Observed-MW:32-55 kDa
Calculated-MW:25 kDa/32 kDa



Western blot analysis of extracts of various cell lines using ORAI1 Polyclonal Antibody at 1:1000 dilution.

Observed-MW:32-55 kDa
Calculated-MW:25 kDa/32 kDa

Preparation & Storage

Storage	Store at -20°C Valid for 12 months. Avoid freeze / thaw cycles.
Shipping	The product is shipped with ice pack, upon receipt, store it immediately at the temperature recommended.

Background

The protein encoded by this gene is a membrane calcium channel subunit that is activated by the calcium sensor STIM1 when calcium stores are depleted. This type of channel is the primary way for calcium influx into T-cells. Defects in this gene are a cause of immune dysfunction with T-cell inactivation due to calcium entry defect type 1 (IDTICED1).

For Research Use Only