

# REG1B Polyclonal Antibody

catalog number: E-AB-18985

**Note:** Centrifuge before opening to ensure complete recovery of vial contents.

## Description

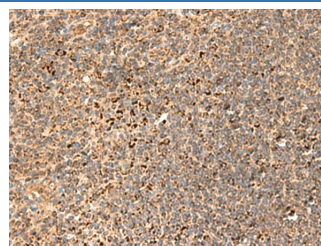
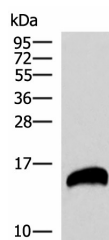
<b>Reactivity</b>	Human
<b>Immunogen</b>	Fusion protein of human REG1B
<b>Host</b>	Rabbit
<b>Isotype</b>	IgG
<b>Purification</b>	Antigen affinity purification
<b>Conjugation</b>	Unconjugated
<b>buffer</b>	Phosphate buffered solution, pH 7.4, containing 0.05% stabilizer and 50% glycerol.

## Applications

## Recommended Dilution

<b>WB</b>	1:1000-1:5000
<b>IHC</b>	1:50-1:300

## Data



Western blot analysis of Human pancreas tissues lysate using REG1B Polyclonal Antibody at dilution of 1:800  
**Observed-MV: Refer to figures**  
**Calculated-MV: 19 kDa**

Immunohistochemistry of paraffin-embedded Human tonsil tissue using REG1B Polyclonal Antibody at dilution of 1:55 (×200)

## Preparation & Storage

<b>Storage</b>	Store at -20°C Valid for 12 months. Avoid freeze / thaw cycles.
<b>Shipping</b>	The product is shipped with ice pack, upon receipt, store it immediately at the temperature recommended.

## Background

Might act as an inhibitor of spontaneous calcium carbonate precipitation. May be associated with neuronal sprouting in brain, and with brain and pancreas regeneration.

## For Research Use Only