

# Recombinant Human SDF2 Protein (His Tag)

Catalog Number:PKSH031339



**Note:** Centrifuge before opening to ensure complete recovery of vial contents.

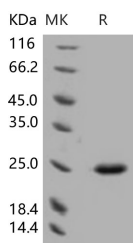
## Description

<b>Synonyms</b>	SDF2
<b>Species</b>	Human
<b>Expression Host</b>	Baculovirus-Insect Cells
<b>Sequence</b>	Met 1-Leu 211
<b>Accession</b>	NP_008854.2
<b>Calculated Molecular Weight</b>	22.7 kDa
<b>Observed molecular weight</b>	22.7 kDa
<b>Tag</b>	C-His

## Properties

<b>Purity</b>	> 95 % as determined by reducing SDS-PAGE.
<b>Endotoxin</b>	< 1.0 EU per µg of the protein as determined by the LAL method.
<b>Storage</b>	Generally, lyophilized proteins are stable for up to 12 months when stored at -20 to -80°C. Reconstituted protein solution can be stored at 4-8°C for 2-7 days. Aliquots of reconstituted samples are stable at < -20°C for 3 months.
<b>Shipping</b>	This product is provided as lyophilized powder which is shipped with ice packs.
<b>Formulation</b>	Lyophilized from sterile 50mM Tris, 100mM NaCl, pH 8.0, 0.5mM PMSF, 0.5mM EDTA, 0.5mM TCEP, 10% glycerol Normally 5 % - 8 % trehalose, mannitol and 0.01 % Tween80 are added as protectants before lyophilization. Please refer to the specific buffer i
<b>Reconstitution</b>	Please refer to the printed manual for detailed information.

## Data



> 95 % as determined by reducing SDS-PAGE.

## Background

Stromal derived factors (SDFs) are a loosely defined group of molecules that are generated by stromal cells. Two of the stromal derived factors, SDF-1 and SDF-4 belong to the chemokine family. Other SDFs, such as SDF-2 and SDF-5 are not well defined and their biological functions are less known. SDF-2 is first isolated from themousestromal cell lineST2 as asecretory protein. The amino acid sequence deduced from themurineclone and thehumanhomologare conserved more than 92 %, and the aa sequence of SDF-2 shows similarity to those ofyeastdolichyl phosphate-D-mannose, protein mannosyltransferases. SDF-1 and its receptor are strongly indicated in the progression of various cancers including breast cancer. SDF-2, SDF2-L1, SDF-4, and SDF-5 are ubiquitously expressed in various cancer cell lines and SDF-2, SDF-4

## For Research Use Only

A Reliable Research Partner in Life Science and Medicine

Toll-free: 1-888-852-8623

Web: [www.elabscience.com](http://www.elabscience.com)

Tel: 1-832-243-6086

Email: [techsupport@elabscience.com](mailto:techsupport@elabscience.com)

Fax: 1-832-243-6017

# Recombinant Human SDF2 Protein (His Tag)

Catalog Number: PKSH031339



and SDF-5 are expressed in mammary tissues. These SDFs have prognostic value and warrant further investigation in their biological functions and clinical value.

---

## For Research Use Only

A Reliable Research Partner in Life Science and Medicine

Toll-free: 1-888-852-8623

Tel: 1-832-243-6086

Fax: 1-832-243-6017

Web: [www.elabscience.com](http://www.elabscience.com)

Email: [techsupport@elabscience.com](mailto:techsupport@elabscience.com)