

Recombinant Human IGSF11/BTIGSF Protein (Fc Tag)

Catalog Number: PKSH033649

Note: Centrifuge before opening to ensure complete recovery of vial contents.

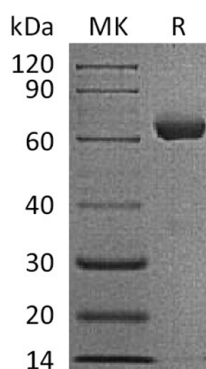
Description

Species	Human
Source	HEK293 Cells-derived Human IGSF11;BTIGSF protein Leu23-Gly245, with an C-terminal Fc
Calculated MW	50.7 kDa
Observed MW	55-70 kDa
Accession	Q5DX21
Bio-activity	Not validated for activity

Properties

Purity	> 95 % as determined by reducing SDS-PAGE.
Endotoxin	< 1.0 EU per µg of the protein as determined by the LAL method.
Storage	Generally, lyophilized proteins are stable for up to 12 months when stored at -20 to -80 °C. Reconstituted protein solution can be stored at 4-8°C for 2-7 days. Aliquots of reconstituted samples are stable at < -20°C for 3 months.
Shipping	This product is provided as lyophilized powder which is shipped with ice packs.
Formulation	Lyophilized from a 0.2 µm filtered solution of PBS, pH 7.4. Normally 5% - 8% trehalose, mannitol and 0.01% Tween 80 are added as protectants before lyophilization.
Reconstitution	Please refer to the specific buffer information in the printed manual. Please refer to the printed manual for detailed information.

Data



> 95 % as determined by reducing SDS-PAGE.

Background

Immunoglobulin superfamily member 11(IGSF11) is abundantly expressed in testis and ovary and to a lower extent in brain, kidney and skeletal muscle.IGSF11 functions as a cell adhesion molecule through homophilic interaction and can also stimulates cell growth.IGSF proteins share significant homology with endothelial cell-selective adhesion molecule and coxsackievirus and adenovirus receptor, which mediates cell attachment and homotypic intercellular interactions.

For Research Use Only