

## Recombinant Human CD48/SLAMF2 Protein(Fc Tag)

**Catalog Number:** PDMH100309

**Note:** Centrifuge before opening to ensure complete recovery of vial contents.

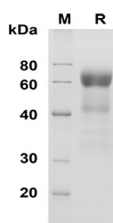
### Description

<b>Species</b>	Human
<b>Source</b>	Mammalian-derived Human CD48/SLAMF2 proteins Gln27-Ser220,with an C-terminal Fc
<b>Calculated MW</b>	46.2 kDa
<b>Observed MW</b>	60 kDa
<b>Accession</b>	P09326
<b>Bio-activity</b>	Not validated for activity

### Properties

<b>Purity</b>	> 90% as determined by reducing SDS-PAGE.
<b>Endotoxin</b>	< 1.0 EU/mg of the protein as determined by the LAL method
<b>Storage</b>	Generally, lyophilized proteins are stable for up to 12 months when stored at -20 to -80°C. Reconstituted protein solution can be stored at 4-8°C for 2-7 days. Aliquots of reconstituted samples are stable at < -20°C for 3 months.
<b>Shipping</b>	This product is provided as lyophilized powder which is shipped with ice packs.
<b>Formulation</b>	Lyophilized from a 0.2 µm filtered solution in PBS with 5% Trehalose and 5% Mannitol.
<b>Reconstitution</b>	It is recommended that sterile water be added to the vial to prepare a stock solution of 0.5 mg/mL. Concentration is measured by UV-Vis.

### Data



SDS-PAGE analysis of Human CD48/SLAMF2 proteins , 2 µg/lane of Recombinant Human CD48/SLAMF2 proteins was resolved with SDS-PAGE under reducing conditions , showing bands at 60 kDa.

### Background

Cluster of Differentiation 48 (CD48) , also known as SLAMF2 , BCM-1 and BLAST-1 , is a GPI-linked protein belonging to the CD2 subfamily of immunoglobulin superfamily molecules. CD2 and 2B4 (CD244) are known ligands for CD48. CD48 protein is expressed on most lineage-committed hematopoietic cells but not on hematopoietic stem cells or multipotent hematopoietic progenitors. CD48 protein performs biological functions in a variety processes including adhesion , pathogen recognition , cellular activation , and cytokine regulation , and emerges as a critical effector molecule in immune responses.

### For Research Use Only

Toll-free: 1-888-852-8623  
Web: [www.elabscience.com](http://www.elabscience.com)

Tel: 1-832-243-6086  
Email: [techsupport@elabscience.com](mailto:techsupport@elabscience.com)

Fax: 1-832-243-6017