

Recombinant HSP70/HSPA1A Monoclonal Antibody

catalog number: **AN300407P**

Note: Centrifuge before opening to ensure complete recovery of vial contents.

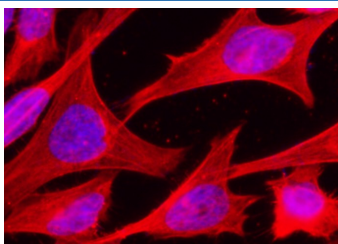
Description

Reactivity	Human
Immunogen	Recombinant Human HSP70/HSPA1A protein
Host	Rabbit
Isotype	IgG
Clone	9D15
Purification	Protein A
Buffer	0.2 µm filtered solution in PBS

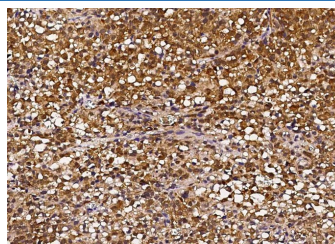
Applications Recommended Dilution

WB	1:500-1:2000
IHC-P	1:500-1:2000
ICC/IF	1:20-1:100
FCM	1:25-1:100
IP	1-4 µL/mg of lysate

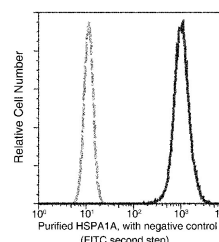
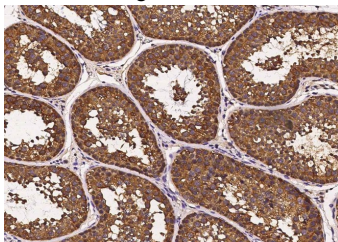
Data



Immunofluorescence analysis of Human HSPA1A in HeLa cells. Cells were fixed with 4% PFA, permeabilized with 0.3% Triton X-100 in PBS, blocked with 10% serum, and incubated with rabbit anti-Human HSPA1A monoclonal antibody (1:60) at 37°C 1 hour. Then cells were stained with the Alexa Fluor® 594-conjugated goat Anti-rabbit IgG secondary antibody (red) and counterstained with DAPI (blue). Positive staining was localized to cytoplasm.



Immunohistochemistry of paraffin-embedded human hepatoma using HSP70/HSPA1A Monoclonal Antibody at dilution of 1:1000.



For Research Use Only

Toll-free: 1-888-852-8623
Web: www.elabscience.com

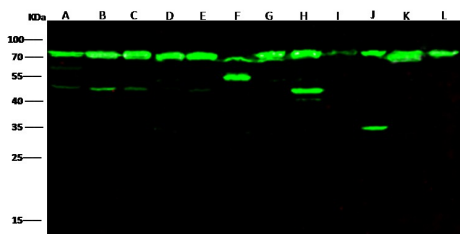
Tel: 1-832-243-6086
Email: techsupport@elabscience.com

Fax: 1-832-243-6017

Rev. V1.0

Immunohistochemistry of paraffin-embedded cynomolgus macaque testis using HSP70/HSPA1A Monoclonal Antibody at dilution of 1:1000.

Flow cytometric analysis of Human HSPA1A expression on HeLa cells. The cells were treated according to manufacturer's manual, stained with purified anti-Human HSPA1A, then a FITC-conjugated second step antibody. The fluorescence histograms were derived from gated events with the forward and side light-scatter characteristics of intact cells.

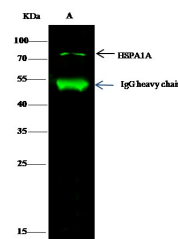


Western Blot with HSPA1A Monoclonal Antibody at dilution of 1:500 dilution. Lane A: A549 whole cell lysate,, Lane B: HCT116 whole cell lysate,, Lane C: Hela whole cell lysate,, Lane D: HepG2 whole cell lysate, Lane E: HL60 whole cell lysate, Lane F: A431 whole cell lysate, Lane G: MCF7 whole cell lysate, Lane H: K562 whole cell lysate, Lane I: C6 whole cell lysate, Lane J: 293T whole cell lysate, Lane K: MOLT4 whole cell lysate, Lane L: Jurkat whole cell lysate,,

Lysates/proteins at 30 µg per lane.

Observed-MW:70 kDa

Calculated-MW:70 kDa



Immunoprecipitation analysis using 2 µL anti-HSPA1A Monoclonal Antibody and 15 µl of 50 % Protein G agarose. Western blot was performed from the immunoprecipitate using HSPA1A Monoclonal Antibody at a dilution of 1:200.

Lane A:0.5 mg Hela Whole Cell Lysate

Observed-MW:70 kDa

Calculated-MW:70 kDa

Preparation & Storage

Storage

This antibody can be stored at 2°C-8°C for one month without detectable loss of activity. Antibody products are stable for twelve months from date of receipt when stored at -20°C to -80°C. Preservative-Free. Avoid repeated freeze-thaw cycles.

Shipping

Ice bag

Background

Hsp70 genes encode abundant heat-inducible 70-kDa hsps (hsp70s). In most eukaryotes hsp70 genes exist as part of a multigene family. They are found in most cellular compartments of eukaryotes including nuclei, mitochondria, chloroplasts, the endoplasmic reticulum and the cytosol, as well as in bacteria. The genes show a high degree of conservation, having at least 50% identity.

For Research Use Only

Toll-free: 1-888-852-8623
Web: www.elabscience.com

Tel: 1-832-243-6086
Email: techsupport@elabscience.com

Fax: 1-832-243-6017

Rev. V1.0