

Dimethyl-Lysine Polyclonal Antibody

catalog number: E-AB-40541

Note: Centrifuge before opening to ensure complete recovery of vial contents.

Description

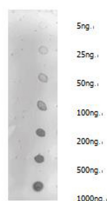
Reactivity	Human;Mouse;E.coli
Immunogen	Dimethyl Protein
Host	Rabbit
Isotype	IgG
Purification	Antigen Affinity Purification
Conjugation	Unconjugated
Buffer	PBS with 0.05% Proclin300, 1% protective protein and 50% glycerol, pH7.4

Applications

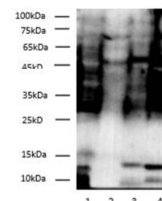
Recommended Dilution

WB	1:1000-2000
Dot	Blot 1:2000

Data



Dot blotting analysis of anti-Dimethyl-Lysine polyclonal antibody on unmodified BSA and dimethyl BSA at dilution of 1:2000.



Western blotting of Dimethyl-Lysine polyclonal antibody at dilution of 1:500. Lane 1: E.coli, Lane 2: Mouse Thymus, Lane 3: Mouse Brain, Lane 4: Hela cell lysates.

Preparation & Storage

Storage	Store at -20°C Valid for 12 months. Avoid freeze / thaw cycles.
Shipping	The product is shipped with ice pack, upon receipt, store it immediately at the temperature recommended.

Background

In proteins, lysine residue can be methylated once, twice or thrice on its terminal sidechain ammonium group. Such methylated lysines play an important role in epigenetics; the methylation of specific lysines of certain histones in a nucleosome