

## PRL/Prolactin Polyclonal Antibody

catalog number: AN000180P

**Note:** Centrifuge before opening to ensure complete recovery of vial contents.

### Description

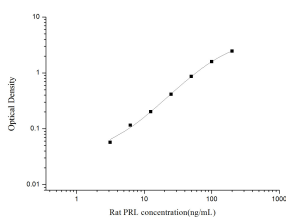
<b>Reactivity</b>	Rat
<b>Immunogen</b>	Recombinant Rat PRL/Prolactin protein expressed by E.coli
<b>Host</b>	Rabbit
<b>Isotype</b>	Rabbit IgG
<b>Purification</b>	Antigen Affinity Purification
<b>Conjugation</b>	Unconjugated
<b>Buffer</b>	Phosphate buffered solution, pH 7.2, containing 0.05% proclin 300.

### Applications

### Recommended Dilution

<b>ELISA Capture</b>	2-8 µg/mL
<b>ELISA Detector</b>	0.1-0.4 µg/mL

### Data



Sandwich ELISA-Recombinant Rat PRL/Prolactin protein standard curve. Background subtracted standard curve using PRL/Prolactin antibody(AN000180P) (Capture), PRL/Prolactin antibody(AN000180P)(Detector) in sandwich ELISA. The reference range value for Recombinant Rat PRL/Prolactin protein is 3.13-200 ng/mL.

### Preparation & Storage

<b>Storage</b>	Store at 4°C valid for 12 months or -20°C valid for long term storage, avoid freeze / thaw cycles.
<b>Shipping</b>	The product is shipped with ice pack, upon receipt, store it immediately at the temperature recommended.

### Background

Prolactin (PRL) is a neuroendocrine pituitary hormone. Prolactin is synthesized by the anterior pituitary, placenta, brain, uterus, dermal fibroblasts, decidua, B cell, T cells, NK cells, and breast cancer cells. Originally characterized as a lactogenic hormone, studies have demonstrated broader roles in breast cancer development, regulation of reproductive function, and immunoregulation.

### For Research Use Only