

## BDH2 Polyclonal Antibody

**catalog number: E-AB-18535**

**Note:** Centrifuge before opening to ensure complete recovery of vial contents.

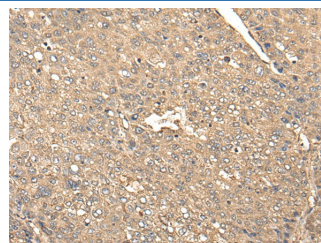
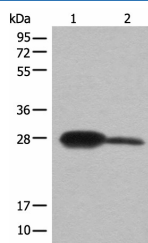
### Description

<b>Reactivity</b>	Human;Mouse;Rat
<b>Immunogen</b>	Full length fusion protein
<b>Host</b>	Rabbit
<b>Isotype</b>	IgG
<b>Purification</b>	Antigen affinity purification
<b>Buffer</b>	Phosphate buffered solution, pH 7.4, containing 0.05% stabilizer and 50% glycerol.

### Applications

Applications	Recommended Dilution
<b>WB</b>	1:500-1:2000
<b>IHC</b>	1:50-1:300

### Data



Western blot analysis of Mouse kidney tissue and A172 cell lysates using BDH2 Polyclonal Antibody at dilution of 1:600      Immunohistochemistry of paraffin-embedded Human liver cancer tissue using BDH2 Polyclonal Antibody at dilution of 1:65(×200)

**Observed-MW:Refer to figures**

**Calculated-MW:27 kDa**

### Preparation & Storage

<b>Storage</b>	Store at -20°C Valid for 12 months. Avoid freeze / thaw cycles.
<b>Shipping</b>	The product is shipped with ice pack,upon receipt,store it immediately at the temperature recommended.

### Background

Dehydrogenase that mediates the formation of 2,5-dihydroxybenzoic acid (2,5-DHBA), a siderophore that shares structural similarities with bacterial enterobactin and associates with LCN2, thereby playing a key role in iron homeostasis and transport. Also acts as a 3-hydroxybutyrate dehydrogenase (By similarity).

### For Research Use Only