

## Recombinant Smad3 Monoclonal Antibody

catalog number: **E-AB-81437**

**Note:** Centrifuge before opening to ensure complete recovery of vial contents.

### Description

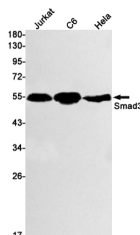
<b>Reactivity</b>	Human;Rat
<b>Immunogen</b>	A synthetic peptide of human Smad3
<b>Host</b>	Rabbit
<b>Isotype</b>	IgG
<b>Clone</b>	R09-7H4
<b>Purification</b>	Affinity Purified
<b>Buffer</b>	50mM Tris-Glycine(pH 7.4), 0.15M NaCl, 40% Glycerol, 0.05% stabilizer and 0.05% protective protein.

### Applications

### Recommended Dilution

<b>WB</b>	1:1000-1:2000
<b>IHC</b>	1:20-1:500

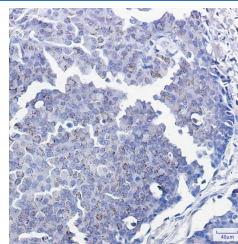
### Data



Western blot detection of Smad3 in Jurkat,C6,Hela cell lysates using Smad3 Rabbit mAb(1:1000 diluted).Predicted band size:48kDa.Observed band size:52kDa.

**Observed-MW:52 kDa**

**Calculated-MW:48 kDa**



Immunohistochemistry of Smad3 in paraffin-embedded Human breast cancer tissue using Smad3 Rabbit mAb at dilution 1:100

### Preparation & Storage

<b>Storage</b>	Store at -20°C Valid for 12 months. Avoid freeze / thaw cycles.
<b>Shipping</b>	The product is shipped with ice pack,upon receipt,store it immediately at the temperature recommended.

### Background

The protein encoded by this gene belongs to the SMAD, a family of proteins similar to the gene products of the Drosophila gene 'mothers against decapentaplegic' (Mad) and the C. elegans gene Sma. SMAD proteins are signal transducers and transcriptional modulators that mediate multiple signaling pathways. This protein functions as a transcriptional modulator activated by transforming growth factor-beta and is thought to play a role in the regulation of carcinogenesis.

### For Research Use Only