

## beta Tubulin Monoclonal Antibody

**catalog number: AN005310L**

**Note:** Centrifuge before opening to ensure complete recovery of vial contents.

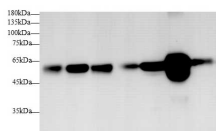
### Description

<b>Reactivity</b>	Human;Mouse;Rat;Zebrafish
<b>Immunogen</b>	Recombinant human TUBB protein by E.coli
<b>Host</b>	Mouse
<b>Isotype</b>	IgG
<b>Clone</b>	2E8-2
<b>Purification</b>	Protein A/G Purification
<b>Buffer</b>	PBS with 0.05% Proclin300, 1% protective protein and 50% glycerol, pH7.4

### Applications

Applications	Recommended Dilution
<b>WB</b>	1:2000-1:4000
<b>IF</b>	1:200-1:400

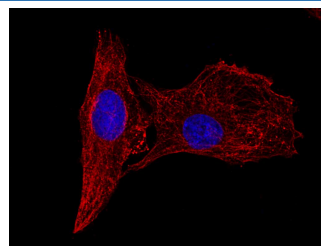
### Data



Western blot with Anti beta Tubulin Monoclonal Antibody at dilution of 1:3000. Lane 1: HT-29 cell lysate, Lane 2: Jurkat cell lysate, Lane 3: 293T cell lysate, Lane 4: Raw264.7 cell lysate, Lane 5: C6 cell lysate, Lane 6: Rat brain tissue lysate, Lane 7: Zebrafish tissue lysate.

**Observed-MW:55 kDa**

**Calculated-MW:55 kDa**



Immunofluorescence analysis of U-2 OS cells using beta Tubulin Monoclonal Antibody at dilution of 1:200.

### Preparation & Storage

<b>Storage</b>	Store at -20°C Valid for 12 months. Avoid freeze / thaw cycles.
<b>Shipping</b>	The product is shipped with ice pack, upon receipt, store it immediately at the temperature recommended.

### Background

In eukaryotes there are six members of the tubulin superfamily.  $\alpha$ - and  $\beta$ -tubulins polymerize into microtubules, a major component of the eukaryotic cytoskeleton. Microtubules function in many essential cellular processes, including mitosis. Both  $\alpha$  and  $\beta$  tubulins have a mass of around 50 kDa. Tubulin was long thought to be specific to eukaryotes. Beta-tubulin gene is commonly used as a loading control for western blot.

### For Research Use Only